

POLR3E Polyclonal Antibody

Description

Product type	Primary Antibody
Code	BT-AP07324
Host	Rabbit
Isotype	IgG
Size	20ul, 50ul, 100ul
Immunogen	The antiserum was produced against synthesized peptide derived from human RPC5. AA range:191-240
Mol wt	79898
Species reactivity	Human, Mouse
Clonality	Polyclonal
Recommended application	WB, IHC-p, IF, ELISA
Concentration	1 mg/ml
Full name	POLR3E Antibody
Synonyms	POLR3E; KIAA1452; DNA-directed RNA polymerase III subunit RPC5; RNA polymerase III subunit C5; DNA-directed RNA polymerase III 80 kDa polypeptide

This product is for research use only, not for use in human, therapeutic or diagnostic procedure.

Background

POLR3E (Polymerase (RNA) III Subunit E) is a Protein Coding gene. Among its related pathways are Gene Expression and Immune System. Gene Ontology (GO) annotations related to POLR3E include DNA-directed RNA polymerase activity and RNA polymerase III activity.

Recommended Dilution

WB: 1: 500 - 1: 2000

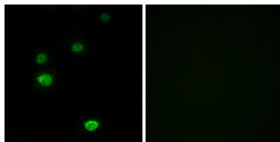
IHC: 1: 100 - 1: 300

IF: 1: 200 - 1: 1000

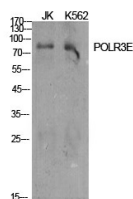
ELISA: 1: 40000

Not yet tested in other applications.

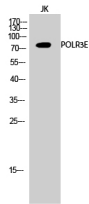
Images



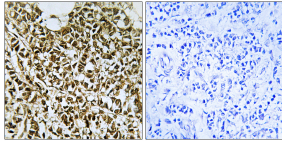
Immunofluorescence analysis of LOVO cells, using RPC5 Antibody. The picture on the right is blocked with the synthesized peptide.



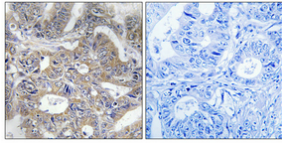
Western Blot analysis of various cells using POLR3E Polyclonal Antibody cells nucleus.



Western Blot analysis of JK cells using POLR3E Polyclonal Antibody cells nucleus.



Immunohistochemistry analysis of paraffin-embedded human breast carcinoma tissue, using RPC5 Antibody. The picture on the right is blocked with the synthesized peptide.



Immunohistochemical analysis of paraffin-embedded Human colon cancer. Antibody was diluted at 1:100(4° overnight). High-pressure and temperature Tris-EDTA,pH8.0 was used for antigen retrieval. Negative contrl (right) obtained from antibody was pre-absorbed by immunogen peptide.

Storage

-20°C for one year

501 Changsheng S Rd, Nanhu Dist, Jiaxing, Zhejiang, China

Tel: 86 21 31007137 | E-mail: save@bt-laboratory.com | www.bt-laboratory.com