

## POM121 Polyclonal Antibody

### Description

<b>Product type</b>	Primary Antibody
<b>Code</b>	BT-AP07327
<b>Host</b>	Rabbit
<b>Isotype</b>	IgG
<b>Size</b>	20ul, 50ul, 100ul
<b>Immunogen</b>	The antiserum was produced against synthesized peptide derived from human POM121. AA range:1197-1246
<b>Mol wt</b>	125059
<b>Species reactivity</b>	Human, Mouse, Rat
<b>Clonality</b>	Polyclonal
<b>Recommended application</b>	WB, IHC-p, ELISA
<b>Concentration</b>	1 mg/ml
<b>Full name</b>	POM121 Antibody
<b>Synonyms</b>	POM121; KIAA0618; NUP121; POM121A; Nuclear envelope pore membrane protein POM 121; Nuclear envelope pore membrane protein POM 121A; Nucleoporin Nup121; Pore membrane protein of 121 kDa; POM121B; Putat

**This product is for research use only, not for use in human, therapeutic or diagnostic procedure.**

### Background

POM121 (POM121 transmembrane nucleoporin) encodes a transmembrane protein that localizes to the inner nuclear membrane and forms a core component of the nuclear pore complex, which mediates transport to and from the nucleus. The encoded protein may anchor this complex to the nuclear envelope. There are multiple related genes and pseudogenes for POM121 on chromosomes 5, 7, 15, and 22. Alternatively spliced transcript variants encoding different isoforms have been observed.

### Recommended Dilution

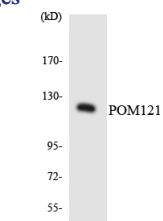
WB: 1: 500 - 1: 2000

IHC: 1: 100 - 1: 300

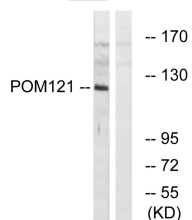
ELISA: 1: 40000

Not yet tested in other applications.

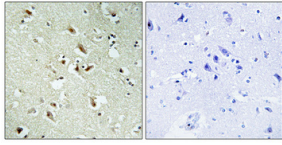
### Images



Western blot analysis of the lysates from HUVEC cells using POM121 antibody.



Western blot analysis of lysates from K562 cells, using POM121 Antibody. The lane on the right is blocked with the synthesized peptide.



Immunohistochemical analysis of paraffin-embedded Human brain. Antibody was diluted at 1:100(4° overnight). High-pressure and temperature Tris-EDTA,pH8.0 was used for antigen retrieval. Negative contrl (right) obtaned from antibody was pre-absorbed by immunogen peptide.

### Storage

-20°C for one year

501 Changsheng S Rd, Nanhu Dist, Jiaxing, Zhejiang, China

Tel: 86 21 31007137 | E-mail: [save@bt-laboratory.com](mailto:save@bt-laboratory.com) | [www.bt-laboratory.com](http://www.bt-laboratory.com)