

NMDA Zeta 1(Phospho Ser896) Polyclonal Antibody

Description

Product type	Primary Antibody
Code	BT-AP07330
Host	Rabbit
Isotype	IgG
Size	20ul, 50ul, 100ul
Immunogen	The antiserum was produced against synthesized peptide derived from human NMDAR1 around the phosphorylation site of Ser896. AA range:862-911
Mol wt	105373
Species reactivity	Human, Mouse, Rat
Clonality	Polyclonal
Recommended application	WB, IHC-p, IF, ELISA
Concentration	1 mg/ml
Full name	Glutamate [NMDA] receptor subunit zeta-1
Synonyms	Glutamate [NMDA] receptor subunit zeta-1; GRIN1; NMDAR1; Glutamate [NMDA; receptor subunit zeta-1; N-methyl-D-aspartate receptor subunit NR1; NMD-R1

This product is for research use only, not for use in human, therapeutic or diagnostic procedure.

Background

The protein encoded by this gene is a critical subunit of N-methyl-D-aspartate receptors, members of the glutamate receptor channel superfamily which are heteromeric protein complexes with multiple subunits arranged to form a ligand-gated ion channel. These subunits play a key role in the plasticity of synapses, which is believed to underlie memory and learning. Cell-specific factors are thought to control expression of different isoforms, possibly contributing to the functional diversity of the subunits. Alternatively spliced transcript variants have been described.

Recommended Dilution

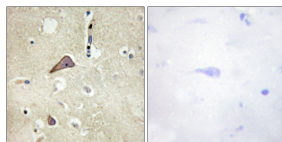
WB: 1: 500 - 1: 2000

IHC-p: 1: 100 - 1: 300

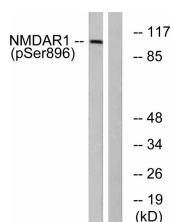
ELISA: 1: 40000

Not yet tested in other applications.

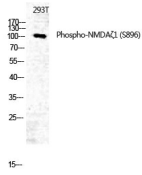
Images



Immunohistochemistry analysis of paraffin-embedded human brain, using NMDAR1 (Phospho-Ser896) Antibody. The picture on the right is blocked with the phospho peptide.



Western Blot analysis of 293T using Phospho-NMDA ζ 1 (S896) Polyclonal Antibody. Antibody was diluted at 1:500



Western blot analysis of lysates from K562 cells treated with PMA 125ng/ml 30', using NMDAR1 (Phospho-Ser896) Antibody. The lane on the right is blocked with the phospho peptide.

Storage

-20°C for 1 year

501 Changsheng S Rd, Nanhu Dist, Jiaxing, Zhejiang, China

Tel: 86 21 31007137 | E-mail: save@bt-laboratory.com | www.bt-laboratory.com