

## POT1 Polyclonal Antibody

### Description

<b>Product type</b>	Primary Antibody
<b>Code</b>	BT-AP07334
<b>Host</b>	Rabbit
<b>Isotype</b>	IgG
<b>Size</b>	20ul, 50ul, 100ul
<b>Immunogen</b>	The antiserum was produced against synthesized peptide derived from human POT1. AA range:247-296
<b>Mol wt</b>	71442
<b>Species reactivity</b>	Human, Monkey
<b>Clonality</b>	Polyclonal
<b>Recommended application</b>	WB, ELISA
<b>Concentration</b>	1 mg/ml
<b>Full name</b>	POT1 Antibody
<b>Synonyms</b>	POT1; Protection of telomeres protein 1; hPot1; POT1-like telomere end-binding protein

**This product is for research use only, not for use in human, therapeutic or diagnostic procedure.**

### Background

POT1 is a member of the telombin family and encodes a nuclear protein involved in telomere maintenance. Specifically, protection of telomeres 1 functions as a member of a multi-protein complex that binds to the TTAGGG repeats of telomeres, regulating telomere length and protecting chromosome ends from illegitimate recombination, catastrophic chromosome instability, and abnormal chromosome segregation. Increased transcriptional expression of POT1 is associated with stomach carcinogenesis and its progression.

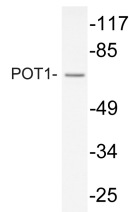
### Recommended Dilution

WB: 1: 500 - 1: 2000

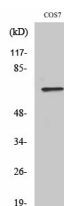
ELISA: 1: 10000

Not yet tested in other applications.

### Images



Western blot analysis of lysate from COS7 cells, using POT1 antibody.



Western Blot analysis of various cells using POT1 Polyclonal Antibody cells nucleus.

## Storage

-20°C for one year

501 Changsheng S Rd, Nanhu Dist, Jiaxing, Zhejiang, China

Tel: 86 21 31007137 | E-mail: [save@bt-laboratory.com](mailto:save@bt-laboratory.com) | [www.bt-laboratory.com](http://www.bt-laboratory.com)