

POTE14/22 Polyclonal Antibody

Description

Product type	Primary Antibody
Code	BT-AP07335
Host	Rabbit
Isotype	IgG
Size	20ul, 50ul, 100ul
Immunogen	The antiserum was produced against synthesized peptide derived from human POTE. AA range:401-450
Mol wt	67066/60965
Species reactivity	Human
Clonality	Polyclonal
Recommended application	WB, IHC-p, ELISA
Concentration	1 mg/ml
Full name	POTE14/22 Antibody
Synonyms	POTEG; A26C2; POTE14; POTE ankyrin domain family member G; ANKRD26-like family C member 2; Prostate; ovary, testis-expressed protein on chromosome 14; POTE-14; POTEH; A26C3; ACTBL1; POTE22; POTE anky

This product is for research use only, not for use in human, therapeutic or diagnostic procedure.

Background

POTEG (POTE Ankyrin Domain Family Member G) is a Protein Coding gene. An important paralog of POT1 is ANKRD18A.

Recommended Dilution

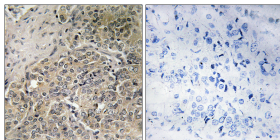
WB: 1: 500 - 1: 2000

IHC: 1: 100 - 1: 300

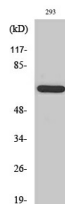
ELISA: 1: 40000

Not yet tested in other applications.

Images



Immunohistochemistry analysis of paraffin-embedded human prostate carcinoma, using A26C2/3 Antibody. The picture on the right is blocked with the synthesized peptide.



Western Blot analysis of various cells using POTE14/22 Polyclonal Antibody

Storage

-20°C for one year