

POTE15 Polyclonal Antibody

Description

Product type	Primary Antibody
Code	BT-AP07337
Host	Rabbit
Isotype	IgG
Size	20ul, 50ul, 100ul
Immunogen	The antiserum was produced against synthesized peptide derived from human A26B1. AA range:481-530
Mol wt	65710
Species reactivity	Human
Clonality	Polyclonal
Recommended application	WB, IHC-p, ELISA
Concentration	1 mg/ml
Full name	POTE15 Antibody
Synonyms	POTEB; A26B1; POTE15; POTE ankyrin domain family member B; ANKRD26-like family B member 1; Prostate; ovary, testis-expressed protein on chromosome 15; POTE-15

This product is for research use only, not for use in human, therapeutic or diagnostic procedure.

Background

POTEB (POTE Ankyrin Domain Family Member B) is a Protein Coding gene. An important paralog of this gene is ANKRD18A.

Recommended Dilution

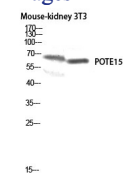
WB: 1: 500 - 1: 2000

IHC: 1: 100 - 1: 300

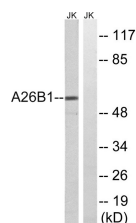
ELISA: 1: 5000

Not yet tested in other applications.

Images



Western blot analysis of Mouse-kidney 3T3 lysis using POTE15 antibody. Antibody was diluted at 1:500



Western blot analysis of lysates from Jurkat cells, using A26B1 Antibody. The lane on the right is blocked with the synthesized peptide.

Storage

-20°C for one year

