

## POTE-8 Polyclonal Antibody

### Description

|                         |   |
|-------------------------|---|
| Product type            | Primary Antibody  |
| Code                    | BT-AP07338  |
| Host                    | Rabbit  |
| Isotype                 | IgG   |
| Size                    | 20ul, 50ul, 100ul   |
| Immunogen               | The antiserum was produced against synthesized peptide derived from human POTE. AA range:375-424  |
| Mol wt                  | 56166   |
| Species reactivity      | Human   |
| Clonality               | Polyclonal  |
| Recommended application | IHC-p, ELISA  |
| Concentration           | 1 mg/ml   |
| Full name               | POTE-8 Antibody   |
| Synonyms                | POTE. A; A26A1; POTE8; POTE ankyrin domain family member A; ANKRD26-like family A member 1; Prostate; ovary, testis-expressed protein on chromosome 8; POTE-8 |

This product is for research use only, not for use in human, therapeutic or diagnostic procedure.

### Background

POTE. A also named as ANKRD26 like family A member 1 or POTE8 is a 498 amino acid protein, which contains five ANK repeats and belongs to the POTE family. POTE. A has an important signaling function in the reproductive system.

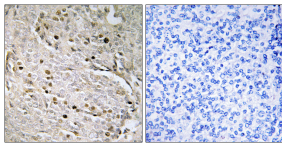
### Recommended Dilution

IHC: 1: 100 - 1: 300

ELISA: 1: 5000

Not yet tested in other applications.

### Images



Immunohistochemistry analysis of paraffin-embedded human prostate carcinoma, using POTE8 Antibody. The picture on the right is blocked with the synthesized peptide.

### Storage

-20°C for one year

501 Changsheng S Rd, Nanhu Dist, Jiaxing, Zhejiang, China

Tel: 86 21 31007137 | E-mail: [save@bt-laboratory.com](mailto:save@bt-laboratory.com) | [www.bt-laboratory.com](http://www.bt-laboratory.com)