

PP2A-ABeta Polyclonal Antibody

Description

Product type	Primary Antibody
Code	BT-AP07343
Host	Rabbit
Isotype	IgG
Size	20ul, 50ul, 100ul
Immunogen	The antiserum was produced against synthesized peptide derived from human PPP2R1B. AA range:552-601
Mol wt	66214
Species reactivity	Human, Mouse, Rat
Clonality	Polyclonal
Recommended application	WB, IHC-p, ELISA
Concentration	1 mg/ml
Full name	PP2A-ABeta Antibody
Synonyms	PPP2R1B; Serine/threonine-protein phosphatase 2A 65 kDa regulatory subunit A beta isoform; PP2A subunit A isoform PR65-beta; PP2A subunit A isoform R1-beta

This product is for research use only, not for use in human, therapeutic or diagnostic procedure.

Background

PPP2R1B encodes a constant regulatory subunit of protein phosphatase 2. Protein phosphatase 2 is one of the four major Ser/Thr phosphatases, and it is implicated in the negative control of cell growth and division. It consists of a common heteromeric core enzyme, which is composed of a catalytic subunit and a constant regulatory subunit, that associates with a variety of regulatory subunits. The constant regulatory subunit A serves as a scaffolding molecule to coordinate the assembly of the catalytic subunit and a variable regulatory B subunit. PPP2R1B encodes a beta isoform of the constant regulatory subunit A. Mutations in PPP2R1B have been associated with some lung and colon cancers. Alternatively spliced transcript variants have been described.

Recommended Dilution

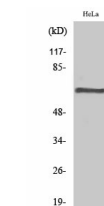
WB: 1: 500 - 1: 2000

ELISA: 1: 20000

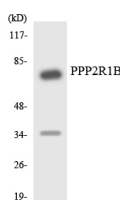
IHC-p: 1: 50 - 300

Not yet tested in other applications.

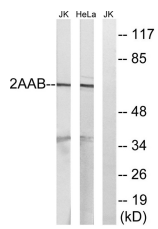
Images



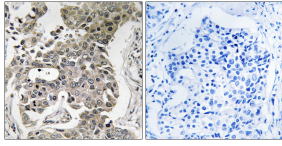
Western Blot analysis of various cells using PP2A-A β Polyclonal Antibody



Western blot analysis of the lysates from Jurkat cells using PPP2R1B antibody.



Western blot analysis of lysates from HeLa and Jurkat cells, using PPP2R1B Antibody. The lane on the right is blocked with the synthesized peptide.



Immunohistochemistry analysis of paraffin-embedded human breast carcinoma tissue, using PPP2R1B Antibody. The picture on the right is blocked with the synthesized peptide.

Storage

-20°C for one year

501 Changsheng S Rd, Nanhu Dist, Jiaxing, Zhejiang, China

Tel: 86 21 31007137 | E-mail: save@bt-laboratory.com | www.bt-laboratory.com