

PP2A-B56- Alpha Polyclonal Antibody

Description

Product type	Primary Antibody
Code	BT-AP07345
Host	Rabbit
Isotype	IgG
Size	20ul, 50ul, 100ul
Immunogen	The antiserum was produced against synthesized peptide derived from human PPP2R5A. AA range:321-370
Mol wt	56194
Species reactivity	Human, Mouse, Rat
Clonality	Polyclonal
Recommended application	WB, ELISA
Concentration	1 mg/ml
Full name	PP2A-B56-alpha Antibody
Synonyms	PPP2R5A; Serine/threonine-protein phosphatase 2A 56 kDa regulatory subunit alpha isoform; PP2A B subunit isoform B'-alpha; PP2A B subunit isoform B56-alpha; PP2A B subunit isoform PR61-alpha; PR61alph

This product is for research use only, not for use in human, therapeutic or diagnostic procedure.

Background

The product of PPP2R5A (protein phosphatase 2 regulatory subunit B'alpha) belongs to the phosphatase 2A regulatory subunit B family. Protein phosphatase 2A is one of the four major Ser/Thr phosphatases, and it is implicated in the negative control of cell growth and division. It consists of a common heteromeric core enzyme, which is composed of a catalytic subunit and a constant regulatory subunit, that associates with a variety of regulatory subunits. The B regulatory subunit might modulate substrate selectivity and catalytic activity. PPP2R5A encodes an alpha isoform of the regulatory subunit B56 subfamily. Alternative transcript variants encoding distinct isoforms have been found for PPP2R5A.

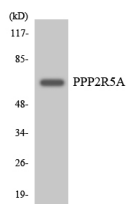
Recommended Dilution

WB: 1: 500 - 1: 2000

ELISA: 1: 5000

Not yet tested in other applications.

Images



Western blot analysis of the lysates from HeLa cells using PPP2R5A antibody.

Storage

-20°C for one year

