

PP2CKappa Polyclonal Antibody

Description

Product type	Primary Antibody
Code	BT-AP07351
Host	Rabbit
Isotype	IgG
Size	20ul, 50ul, 100ul
Immunogen	The antiserum was produced against synthesized peptide derived from human PPM1K. AA range:205-254
Mol wt	40997
Species reactivity	Human
Clonality	Polyclonal
Recommended application	WB, IHC-p, ELISA
Concentration	1 mg/ml
Full name	PP2CKappa Antibody
Synonyms	PPM1K; PP2CM; Protein phosphatase 1K; mitochondrial; PP2C domain-containing protein phosphatase 1K; PP2C-like mitochondrial protein; PP2C-type mitochondrial phosphoprotein phosphatase; PTMP; Protein

This product is for research use only, not for use in human, therapeutic or diagnostic procedure.

Background

PPM1K encodes a member of the PPM family of Mn^{2+}/Mg^{2+} -dependent protein phosphatases. Protein phosphatase, Mg^{2+}/Mn^{2+} dependent 1K, essential for cell survival and development, is targeted to the mitochondria where it plays a key role in regulation of the mitochondrial permeability transition pore.

Recommended Dilution

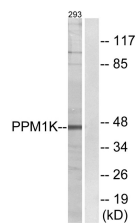
WB: 1: 500 - 1: 2000

IHC: 1: 100 - 1: 300

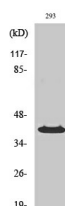
ELISA: 1: 40000

Not yet tested in other applications.

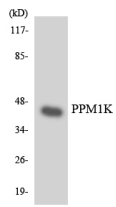
Images



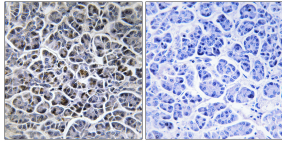
Western blot analysis of lysates from 293 cells, using PPM1K Antibody. The lane on the right is blocked with the synthesized peptide.



Western Blot analysis of various cells using PP2Ck Polyclonal Antibody



Western blot analysis of the lysates from HeLa cells using PPM1K antibody.



Immunohistochemistry analysis of paraffin-embedded human pancreas tissue, using PPM1K Antibody. The picture on the right is blocked with the synthesized peptide.

Storage

-20°C for one year

501 Changsheng S Rd, Nanhu Dist, Jiaxing, Zhejiang, China

Tel: 86 21 31007137 | E-mail: save@bt-laboratory.com | www.bt-laboratory.com