

## PP32R1 Polyclonal Antibody

### Description

<b>Product type</b>	Primary Antibody
<b>Code</b>	BT-AP07352
<b>Host</b>	Rabbit
<b>Isotype</b>	IgG
<b>Size</b>	20ul, 50ul, 100ul
<b>Immunogen</b>	The antiserum was produced against synthesized peptide derived from human ANP32C. AA range:121-170
<b>Mol wt</b>	26762
<b>Species reactivity</b>	Human
<b>Clonality</b>	Polyclonal
<b>Recommended application</b>	WB, ELISA
<b>Concentration</b>	1 mg/ml
<b>Full name</b>	PP32R1 Antibody
<b>Synonyms</b>	ANP32C; PP32R1; Acidic leucine-rich nuclear phosphoprotein 32 family member C; Phosphoprotein 32-related protein 1; Tumorigenic protein pp32r1

This product is for research use only, not for use in human, therapeutic or diagnostic procedure.

### Background

Phosphoprotein 32 (PP32) is a tumor suppressor that can inhibit several types of cancers, including prostate and breast cancers. Acidic nuclear phosphoprotein 32 family member C encoded by ANP32C is one of at least two proteins that are similar in amino acid sequence to PP32 and are part of the same acidic nuclear phosphoprotein gene family. However, unlike PP32, the encoded protein is tumorigenic. The tumor suppressor function of PP32 has been localized to a 25 amino acid region that is divergent between PP32 and acidic nuclear phosphoprotein 32 family member C encoded by ANP32C. ANP32C does not contain introns.

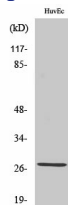
### Recommended Dilution

WB: 1: 500 - 1: 2000

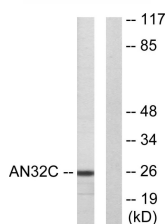
ELISA: 1: 10000

Not yet tested in other applications.

### Images



Western Blot analysis of various cells using PP32R1 Polyclonal Antibody diluted at 1:1000



Western blot analysis of lysates from HUVEC cells, using ANP32C Antibody. The lane on the right is blocked with the synthesized peptide.

## Storage

-20°C for one year

501 Changsheng S Rd, Nanhu Dist, Jiaxing, Zhejiang, China

Tel: 86 21 31007137 | E-mail: [save@bt-laboratory.com](mailto:save@bt-laboratory.com) | [www.bt-laboratory.com](http://www.bt-laboratory.com)