

PP4R2 Polyclonal Antibody

Description

Product type	Primary Antibody
Code	BT-AP07354
Host	Rabbit
Isotype	IgG
Size	20ul, 50ul, 100ul
Immunogen	The antiserum was produced against synthesized peptide derived from human PPP4R2. AA range:171-220
Mol wt	46898
Species reactivity	Human, Monkey
Clonality	Polyclonal
Recommended application	WB, IHC-p, ELISA
Concentration	1 mg/ml
Full name	PP4R2 Antibody
Synonyms	PPP4R2; SBB157; Serine/threonine-protein phosphatase 4 regulatory subunit 2

This product is for research use only, not for use in human, therapeutic or diagnostic procedure.

Background

Serine/threonine-protein phosphatase 4 regulatory subunit 2 encoded by PPP4R2 is a regulatory subunit of the serine/threonine-protein phosphatase 4 complex. In addition to being required for efficient DNA double strand break repair, this complex plays a role in organization of microtubules at centrosomes and processing of spliceosomal snRNPs. Several transcript variants encoding different isoforms have been found for this gene.

Recommended Dilution

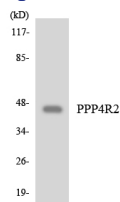
WB: 1: 500 - 1: 2000

IHC: 1: 100 - 1: 300

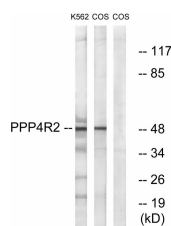
ELISA: 1: 5000

Not yet tested in other applications.

Images

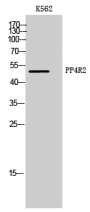


Western blot analysis of the lysates from COLO205 cells using PPP4R2 antibody.



Western blot analysis of lysates from K562 and COS7 cells, using PPP4R2 Antibody. The lane on the right is blocked with the synthesized peptide.

Western Blot analysis of K562 cells using PP4R2 Polyclonal Antibody



Storage

-20°C for one year

501 Changsheng S Rd, Nanhu Dist, Jiaxing, Zhejiang, China

Tel: 86 21 31007137 | E-mail: save@bt-laboratory.com | www.bt-laboratory.com