

## CD299 Polyclonal Antibody

### Description

|                         |                                                                                                                                                                                                                                                                                                                                                                                                                                                              |
|-------------------------|--------------------------------------------------------------------------------------------------------------------------------------------------------------------------------------------------------------------------------------------------------------------------------------------------------------------------------------------------------------------------------------------------------------------------------------------------------------|
| Product type            | Primary Antibody                                                                                                                                                                                                                                                                                                                                                                                                                                             |
| Code                    | BT-AP07361                                                                                                                                                                                                                                                                                                                                                                                                                                                   |
| Host                    | Rabbit                                                                                                                                                                                                                                                                                                                                                                                                                                                       |
| Isotype                 | IgG                                                                                                                                                                                                                                                                                                                                                                                                                                                          |
| Size                    | 20ul, 50ul, 100ul                                                                                                                                                                                                                                                                                                                                                                                                                                            |
| Immunogen               | Synthetic peptide from human protein at AA range: 271-320                                                                                                                                                                                                                                                                                                                                                                                                    |
| Mol wt                  | N/A                                                                                                                                                                                                                                                                                                                                                                                                                                                          |
| Species reactivity      | Human, Mouse, Rat                                                                                                                                                                                                                                                                                                                                                                                                                                            |
| Clonality               | Polyclonal                                                                                                                                                                                                                                                                                                                                                                                                                                                   |
| Recommended application | WB, IHC-p, IF, ELISA                                                                                                                                                                                                                                                                                                                                                                                                                                         |
| Concentration           | 1 mg/ml                                                                                                                                                                                                                                                                                                                                                                                                                                                      |
| Full name               | C-type lectin domain family 4 member M                                                                                                                                                                                                                                                                                                                                                                                                                       |
| Synonyms                | C-type lectin domain family 4 member M ;CD209 antigen-like protein 1;DC-SIGN-related protein;DC-SIGNR;Dendritic cell-specific ICAM-3-grabbing non-integrin 2;DC-SIGN2;Liver/lymph node-specific; C-type lectin domain family 4 member M; CD209 antigen-like protein 1; DC-SIGN-related protein; DC-SIGNR; Dendritic cell-specific ICAM-3-grabbing non-integrin 2; DC-SIGN2; Liver/lymph node-specific ICAM-3-grabbing non-integrin; L-SIGN; CD antigen CD299 |

**This product is for research use only, not for use in human, therapeutic or diagnostic procedure.**

### Background

This gene encodes a transmembrane receptor and is often referred to as L-SIGN because of its expression in the endothelial cells of the lymph nodes and liver. The encoded protein is involved in the innate immune system and recognizes numerous evolutionarily divergent pathogens ranging from parasites to viruses, with a large impact on public health. The protein is organized into three distinct domains: an N-terminal transmembrane domain, a tandem-repeat neck domain and C-type lectin carbohydrate recognition domain. The extracellular region consisting of the C-type lectin and neck domains has a dual function as a pathogen recognition receptor and a cell adhesion receptor by binding carbohydrate ligands on the surface of microbes and endogenous cells. The neck region is important for homo-oligomerization which allows the receptor to bind multivalent ligands with high avidity. Variations

### Recommended Dilution

WB: 1: 500 - 1: 2000

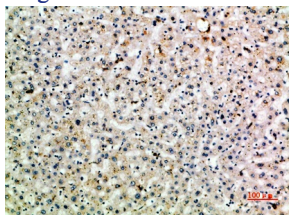
IHC-p: 1: 500 - 1: 200

ELISA: 1: 20000

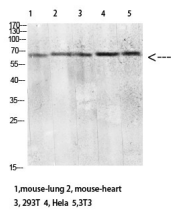
ELISA: 1: 10000 - 1: 20000

Not yet tested in other applications.

### Images



Immunohistochemical analysis of paraffin-embedded human-liver, antibody was diluted at 1:200



Western blot analysis of mouse-lung mouse-lung lysate, antibody was diluted at 2000. Secondary antibody was diluted at 1:20000

### Storage

-20°C for 1 year

501 Changsheng S Rd, Nanhu Dist, Jiaxing, Zhejiang, China

Tel: 86 21 31007137 | E-mail: [save@bt-laboratory.com](mailto:save@bt-laboratory.com) | [www.bt-laboratory.com](http://www.bt-laboratory.com)