

PPP1R3A Polyclonal Antibody

Description

Product type	Primary Antibody
Code	BT-AP07370
Host	Rabbit
Isotype	IgG
Size	20ul, 50ul, 100ul
Immunogen	The antiserum was produced against synthesized peptide derived from human PPP1R3A. AA range:647-696
Mol wt	125837
Species reactivity	Human
Clonality	Polyclonal
Recommended application	WB, ELISA
Concentration	1 mg/ml
Full name	PPP1R3A Antibody
Synonyms	PPP1R3A; PP1G; Protein phosphatase 1 regulatory subunit 3A; Protein phosphatase 1 glycogen-associated regulatory subunit; Protein phosphatase type-1 glycogen targeting subunit; RG1

This product is for research use only, not for use in human, therapeutic or diagnostic procedure.

Background

The glycogen-associated form of protein phosphatase-1 (PP1) derived from skeletal muscle is a heterodimer composed of a 37-kD catalytic subunit and a 124-kD targeting and regulatory subunit. PPP1R3A (protein phosphatase 1 regulatory subunit 3A) encodes the regulatory subunit which binds to muscle glycogen with high affinity, thereby enhancing dephosphorylation of glycogen-bound substrates for PP1 such as glycogen synthase and glycogen phosphorylase kinase.

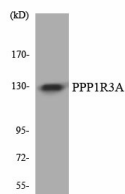
Recommended Dilution

WB: 1: 500 - 1: 2000

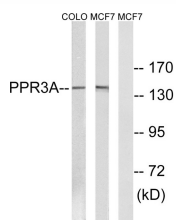
ELISA: 1: 20000

Not yet tested in other applications.

Images



Western blot analysis of the lysates from HT-29 cells using PPP1R3A antibody.



Western blot analysis of lysates from MCF-7 and COLO cells, using PPP1R3A Antibody. The lane on the right is blocked with the synthesized peptide.

Storage

-20°C for one year

501 Changsheng S Rd, Nanhu Dist, Jiaxing, Zhejiang, China

Tel: 86 21 31007137 | E-mail: save@bt-laboratory.com | www.bt-laboratory.com