

## CD300a Polyclonal Antibody

### Description

Product type	Primary Antibody
Code	BT-AP07373
Host	Rabbit
Isotype	IgG
Size	20ul, 50ul, 100ul
Immunogen	Synthetic peptide from human protein at AA range: 141-190
Mol wt	N/A
Species reactivity	Human, Rat, Mouse
Clonality	Polyclonal
Recommended application	IHC-p, IF, ELISA
Concentration	1 mg/ml
Full name	CMRF35-like molecule 8
Synonyms	CMRF35-like molecule 8 ;CLM-8;CD300 antigen-like family member A;CMRF-35-H9;CMRF35-H9;CMRF35-H;IRC1/IRC2;Immunoglobulin superfamily member 12;IgSF12;Inhibitory receptor protein 60;IR; CMRF35-like molecule 8; CLM-8; CD300 antigen-like family member A; CMRF-35-H9; CMRF35-H9; CMRF35-H; IRC1/IRC2; Immunoglobulin superfamily member 12; IgSF12; Inhibitory receptor protein 60; IRp60; NK inhibitory receptor; CD antigen CD300a

**This product is for research use only, not for use in human, therapeutic or diagnostic procedure.**

### Background

This gene encodes a member of the CD300 glycoprotein family of cell surface proteins found on leukocytes involved in immune response signaling pathways. This gene is located on chromosome 17 in a cluster with all but one of the other family members. Multiple transcript variants encoding different isoforms have been found for this gene.

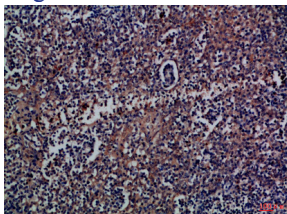
### Recommended Dilution

IHC-p: 1: 50 - 1: 200

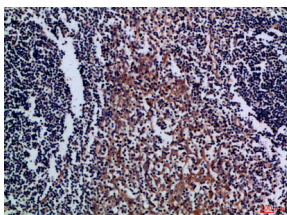
ELISA: 1: 10000 - 1: 20000

Not yet tested in other applications.

### Images



Immunohistochemical analysis of paraffin-embedded Human-tonsil, antibody was diluted at 1:100



Immunohistochemical analysis of paraffin-embedded Human-tonsil, antibody was diluted at 1:100

## Storage

-20°C for 1 year

501 Changsheng S Rd, Nanhu Dist, Jiaxing, Zhejiang, China

Tel: 86 21 31007137 | E-mail: [save@bt-laboratory.com](mailto:save@bt-laboratory.com) | [www.bt-laboratory.com](http://www.bt-laboratory.com)