

PR Polyclonal Antibody

Description

Product type	Primary Antibody
Code	BT-AP07375
Host	Rabbit
Isotype	IgG
Size	20ul, 50ul, 100ul
Immunogen	The antiserum was produced against synthesized peptide derived from human Progesterone Receptor. AA range:261-310
Mol wt	98981
Species reactivity	Human, Mouse, Rat
Clonality	Polyclonal
Recommended application	IHC-p, IF, ELISA
Concentration	1 mg/ml
Full name	PR Antibody
Synonyms	PGR; NR3C3; Progesterone receptor; PR; Nuclear receptor subfamily 3 group C member 3

This product is for research use only, not for use in human, therapeutic or diagnostic procedure.

Background

PGR (progesterone receptor) encodes a member of the steroid receptor superfamily. The encoded protein mediates the physiological effects of progesterone, which plays a central role in reproductive events associated with the establishment and maintenance of pregnancy. This gene uses two distinct promoters and translation start sites in the first exon to produce several transcript variants, both protein coding and non-protein coding. Two of the isoforms (A and B) are identical except for an additional 165 amino acids found in the N-terminus of isoform B and mediate their own response genes and physiologic effects with little overlap.

Recommended Dilution

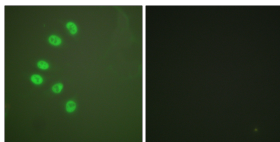
IHC: 1: 100 - 1: 300

IF: 1: 200 - 1: 1000

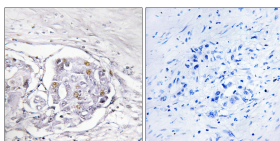
ELISA: 1: 5000

Not yet tested in other applications.

Images



Immunofluorescence analysis of A549 cells, using Progesterone Receptor Antibody. The picture on the right is blocked with the synthesized peptide.



Immunohistochemistry analysis of paraffin-embedded human liver carcinoma tissue, using Progesterone Receptor Antibody. The picture on the right is blocked with the synthesized peptide.

Storage

-20°C for one year

501 Changsheng S Rd, Nanhu Dist, Jiaxing, Zhejiang, China

Tel: 86 21 31007137 | E-mail: save@bt-laboratory.com | www.bt-laboratory.com