

PRAF2 Polyclonal Antibody

Description

Product type	Primary Antibody
Code	BT-AP07381
Host	Rabbit
Isotype	IgG
Size	20ul, 50ul, 100ul
Immunogen	The antiserum was produced against synthesized peptide derived from human JM4. AA range:129-178
Mol wt	19258
Species reactivity	Human, Mouse, Rat
Clonality	Polyclonal
Recommended application	WB, IHC-p, IF, ELISA
Concentration	1 mg/ml
Full name	PRAF2 Antibody
Synonyms	PRAF2; JM4; PRA1 family protein 2

This product is for research use only, not for use in human, therapeutic or diagnostic procedure.

Background

PRAF2 (PRA1 Domain Family Member 2) is a Protein Coding gene. Diseases associated with PRAF2 include neuroblastoma. An important paralog of PRAF2 is ARL6IP5.

Recommended Dilution

WB: 1: 500 - 1: 2000

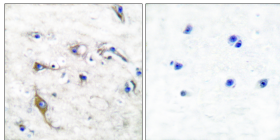
IHC: 1: 100 - 1: 300

IF: 1: 200 - 1: 1000

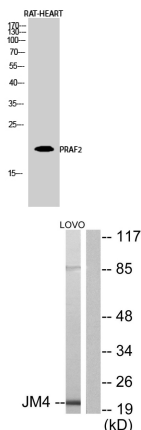
ELISA: 1: 40000

Not yet tested in other applications.

Images

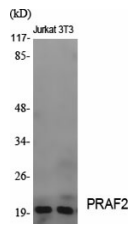


Immunohistochemistry analysis of paraffin-embedded human brain tissue, using JM4 Antibody. The picture on the right is blocked with the synthesized peptide.



Western Blot analysis of RAT-HEART cells using PRAF2 Polyclonal Antibody diluted at 1:2000

Western blot analysis of lysates from LOVO cells, using JM4 Antibody. The lane on the right is blocked with the synthesized peptide.



Western Blot analysis of various cells using PRAF2 Polyclonal Antibody diluted at 1:2000

Storage

-20°C for one year

501 Changsheng S Rd, Nanhu Dist, Jiaxing, Zhejiang, China

Tel: 86 21 31007137 | E-mail: save@bt-laboratory.com | www.bt-laboratory.com