

PRC Polyclonal Antibody

Description

Product type	Primary Antibody
Code	BT-AP07385
Host	Rabbit
Isotype	IgG
Size	20ul, 50ul, 100ul
Immunogen	The antiserum was produced against synthesized peptide derived from human PPRC1. AA range:1609-1658
Mol wt	177544
Species reactivity	Human, Mouse
Clonality	Polyclonal
Recommended application	IHC-p, ELISA
Concentration	1 mg/ml
Full name	PRC Antibody
Synonyms	PPRC1; KIAA0595; Peroxisome proliferator-activated receptor gamma coactivator-related protein 1; PGC-1-related coactivator; PRC

This product is for research use only, not for use in human, therapeutic or diagnostic procedure.

Background

The peroxisome proliferator-activated receptor gamma, coactivator-related 1 encoded by PPRC1 is similar to PPAR-gamma coactivator 1 (PPARGC1/PGC-1), a protein that can activate mitochondrial biogenesis in part through a direct interaction with nuclear respiratory factor 1 (NRF1). This protein has been shown to interact with NRF1. It is thought to be a functional relative of PPAR-gamma coactivator 1 that activates mitochondrial biogenesis through NRF1 in response to proliferative signals. Alternative splicing results in multiple transcript variants.

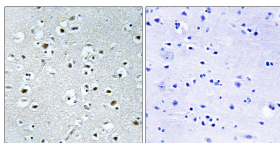
Recommended Dilution

IHC: 1: 100 - 1: 300

ELISA: 1: 40000

Not yet tested in other applications.

Images



Immunohistochemistry analysis of paraffin-embedded human brain tissue, using PPRC1 Antibody. The picture on the right is blocked with the synthesized peptide.

Storage

-20°C for one year