

PRDM12 Polyclonal Antibody

Description

Product type	Primary Antibody
Code	BT-AP07388
Host	Rabbit
Isotype	IgG
Size	20ul, 50ul, 100ul
Immunogen	The antiserum was produced against synthesized peptide derived from human PRDM12. AA range:191-240
Mol wt	40403
Species reactivity	Human, Mouse
Clonality	Polyclonal
Recommended application	WB, IF, ELISA
Concentration	1 mg/ml
Full name	PRDM12 Antibody
Synonyms	PRDM12; PFM9; PR domain zinc finger protein 12; PR domain-containing protein 12

This product is for research use only, not for use in human, therapeutic or diagnostic procedure.

Background

PRDM12 (PR Domain 12) is a Protein Coding gene. Diseases associated with PRDM12 include neuropathy, hereditary sensory and autonomic, type viii. Gene Ontology (GO) annotations related to PRDM12 include methyltransferase activity. An important paralog of PRDM12 is PRDM6.

Recommended Dilution

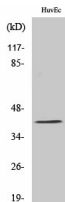
WB: 1: 500 - 1: 2000

IF: 1: 200 - 1: 1000

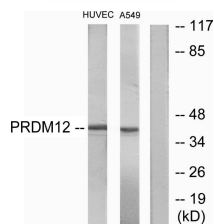
ELISA: 1: 20000

Not yet tested in other applications.

Images



Western Blot analysis of various cells using PRDM12 Polyclonal Antibody cells nucleus.



Western blot analysis of lysates from HUVEC and A549 cells, using PRDM12 Antibody. The lane on the right is blocked with the synthesized peptide.

Storage

-20°C for one year

501 Changsheng S Rd, Nanhu Dist, Jiaxing, Zhejiang, China

Tel: 86 21 31007137 | E-mail: save@bt-laboratory.com | www.bt-laboratory.com