

PRDM3 Polyclonal Antibody

Description

Product type	Primary Antibody
Code	BT-AP07389
Host	Rabbit
Isotype	IgG
Size	20ul, 50ul, 100ul
Immunogen	The antiserum was produced against synthesized peptide derived from human MECOM. AA range:1-50
Mol wt	18696
Species reactivity	Human
Clonality	Polyclonal
Recommended application	WB, IHC-p, ELISA
Concentration	1 mg/ml
Full name	PRDM3 Antibody
Synonyms	MECOM; MDS1; MDS1 and EVI1 complex locus protein MDS1; Myelodysplasia syndrome 1 protein; Myelodysplasia syndrome-associated protein 1

This product is for research use only, not for use in human, therapeutic or diagnostic procedure.

Background

PRDM3 can be produced either as a separate transcript and as a fusion transcript with EVI1. A chromosomal aberration involving PRDM3 is found in a form of acute myeloid leukemia. The myelodysplastic syndromes (MDS, formerly known as "preleukemia") are a diverse collection of hematological conditions united by ineffective production of blood cells and varying risks of transformation to acute myelogenous leukemia.

Recommended Dilution

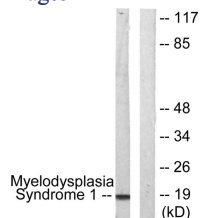
WB: 1: 500 - 1: 2000

IHC: 1: 100 - 1: 300

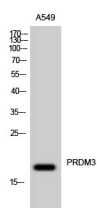
ELISA: 1: 20000

Not yet tested in other applications.

Images



Western blot analysis of lysates from A549 cells, using Myelodysplasia Syndrome 1 Antibody. The lane on the right is blocked with the synthesized peptide.



Western Blot analysis of A549 cells using PRDM3 Polyclonal Antibody cells nucleus.

Storage

-20°C for one year

501 Changsheng S Rd, Nanhu Dist, Jiaxing, Zhejiang, China

Tel: 86 21 31007137 | E-mail: save@bt-laboratory.com | www.bt-laboratory.com