

Prefoldin 1 Polyclonal Antibody

Description

Product type	Primary Antibody
Code	BT-AP07392
Host	Rabbit
Isotype	IgG
Size	20ul, 50ul, 100ul
Immunogen	The antiserum was produced against synthesized peptide derived from human PFDN1. AA range:1-50
Mol wt	14210
Species reactivity	Human, Mouse
Clonality	Polyclonal
Recommended application	WB, IHC-p, ELISA
Concentration	1 mg/ml
Full name	Prefoldin 1 Antibody
Synonyms	PFDN1; PFD1; Prefoldin subunit 1

This product is for research use only, not for use in human, therapeutic or diagnostic procedure.

Background

PFDN1 (prefoldin subunit 1) encodes a member of the prefoldin beta subunit family. The encoded protein is one of six subunits of prefoldin, a molecular chaperone complex that binds and stabilizes newly synthesized polypeptides, thereby allowing them to fold correctly. The complex, consisting of two alpha and four beta subunits, forms a double beta barrel assembly with six protruding coiled-coils.

Recommended Dilution

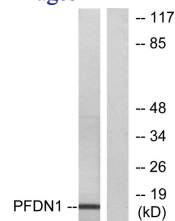
WB: 1: 500 - 1: 2000

IHC: 1: 100 - 1: 300

ELISA: 1: 20000

Not yet tested in other applications.

Images



Western blot analysis of lysates from RAW264.7 cells, using PFDN1 Antibody. The lane on the right is blocked with the synthesized peptide.

Storage

-20°C for one year