

PRKX Polyclonal Antibody

Description

Product type	Primary Antibody
Code	BT-AP07402
Host	Rabbit
Isotype	IgG
Size	20ul, 50ul, 100ul
Immunogen	The antiserum was produced against synthesized peptide derived from human PRKX. AA range:251-300
Mol wt	40896
Species reactivity	Human, Mouse, Rat
Clonality	Polyclonal
Recommended application	WB, IHC-p, ELISA
Concentration	1 mg/ml
Full name	PRKX Antibody
Synonyms	PRKX; PKX1; cAMP-dependent protein kinase catalytic subunit PRKX; PrKX; Protein kinase X; Protein kinase X-linked; Serine/threonine-protein kinase PRKX; Protein kinase PKX1

This product is for research use only, not for use in human, therapeutic or diagnostic procedure.

Background

PRKX (protein kinase, X-linked) encodes a serine threonine protein kinase that has similarity to the catalytic subunit of cyclic AMP dependent protein kinases. The encoded protein is developmentally regulated and may be involved in renal epithelial morphogenesis. This protein may also be involved in macrophage and granulocyte maturation. Abnormal recombination between PRKX and a related pseudogene on chromosome Y is a frequent cause of sex reversal disorder in XX males and XY females. Pseudogenes of PRKX are found on chromosomes X, 15 and Y.

Recommended Dilution

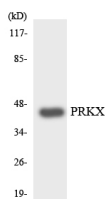
WB: 1: 500 - 1: 2000

IHC: 1: 100 - 1: 300

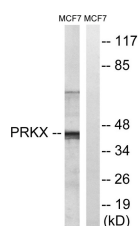
ELISA: 1: 20000

Not yet tested in other applications.

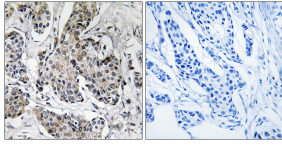
Images



Western blot analysis of the lysates from HepG2 cells using PRKX antibody.



Western blot analysis of lysates from MCF-7 cells, using PRKX Antibody. The lane on the right is blocked with the synthesized peptide.



Immunohistochemistry analysis of paraffin-embedded human breast carcinoma tissue, using PRKX Antibody. The picture on the right is blocked with the synthesized peptide.

Storage

-20°C for one year

501 Changsheng S Rd, Nanhu Dist, Jiaxing, Zhejiang, China

Tel: 86 21 31007137 | E-mail: save@bt-laboratory.com | www.bt-laboratory.com