

Probetacellulin Polyclonal Antibody

Description

Product type	Primary Antibody
Code	BT-AP07405
Host	Rabbit
Isotype	IgG
Size	20ul, 50ul, 100ul
Immunogen	Synthesized peptide derived from Probetacellulin . at AA range: 60-140
Mol wt	19746
Species reactivity	Human
Clonality	Polyclonal
Recommended application	WB, ELISA
Concentration	1 mg/ml
Full name	Probetacellulin Antibody
Synonyms	BTC; Probetacellulin

This product is for research use only, not for use in human, therapeutic or diagnostic procedure.

Background

BTC encodes a member of the epidermal growth factor (EGF) family of proteins. Alternative splicing results in multiple transcript variants, at least one of which encodes a preproprotein that is proteolytically processed to generate the secreted growth factor. A secreted form and a membrane-anchored form of betacellulin bind to multiple different EGF receptors. Betacellulin promotes pancreatic cell proliferation and insulin secretion, as well as retinal vascular permeability. Mutations in BTC may be associated with type 2 diabetes in human patients.

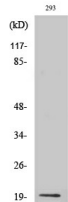
Recommended Dilution

WB: 1: 500 - 1: 2000

ELISA: 1: 40000

Not yet tested in other applications.

Images



Western Blot analysis of various cells using Probetacellulin Polyclonal Antibody diluted at 1:1000

Storage

-20°C for one year