

Prothrombin Polyclonal Antibody

Description

Product type	Primary Antibody
Code	BT-AP07416
Host	Rabbit
Isotype	IgG
Size	20ul, 50ul, 100ul
Immunogen	The antiserum was produced against synthesized peptide derived from human THRB. AA range:391-440
Mol wt	70037
Species reactivity	Human, Mouse, Rat
Clonality	Polyclonal
Recommended application	WB, IHC-p, IF, ELISA
Concentration	1 mg/ml
Full name	Prothrombin Antibody
Synonyms	F2; Prothrombin; Coagulation factor II

This product is for research use only, not for use in human, therapeutic or diagnostic procedure.

Background

Coagulation factor II is proteolytically cleaved to form thrombin in the first step of the coagulation cascade which ultimately results in the stemming of blood loss. F2 also plays a role in maintaining vascular integrity during development and postnatal life. Peptides derived from the C-terminus of this protein have antimicrobial activity against E.coli and P. aeruginosa. Mutations in F2 lead to various forms of thrombosis and dysprothrombinemia. Alternative splicing results in multiple transcript variants.

Recommended Dilution

WB: 1: 500 - 1: 2000

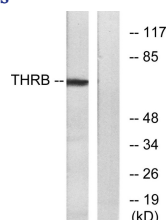
IHC: 1: 100 - 1: 300

IF: 1: 200 - 1: 1000

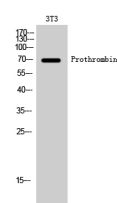
ELISA: 1: 10000

Not yet tested in other applications.

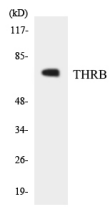
Images



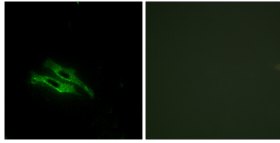
Western blot analysis of lysates from NIH/3T3 cells, using THRB Antibody. The lane on the right is blocked with the synthesized peptide.



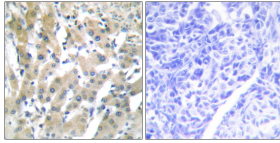
Western Blot analysis of 3T3 cells using Prothrombin Polyclonal Antibody



Western blot analysis of the lysates from RAW264.7 cells using THR B antibody.



Immunofluorescence analysis of NIH/3T3 cells, using THR B Antibody. The picture on the right is blocked with the synthesized peptide.



Immunohistochemistry analysis of paraffin-embedded human liver carcinoma tissue, using THR B Antibody. The picture on the right is blocked with the synthesized peptide.

Storage

-20°C for one year

501 Changsheng S Rd, Nanhu Dist, Jiaxing, Zhejiang, China

Tel: 86 21 31007137 | E-mail: save@bt-laboratory.com | www.bt-laboratory.com