

## Protocadherin-11 Polyclonal Antibody

### Description

<b>Product type</b>	Primary Antibody
<b>Code</b>	BT-AP07417
<b>Host</b>	Rabbit
<b>Isotype</b>	IgG
<b>Size</b>	20ul, 50ul, 100ul
<b>Immunogen</b>	The antiserum was produced against synthesized peptide derived from human PCDH-X/Y. AA range:531-580
<b>Mol wt</b>	146775
<b>Species reactivity</b>	Human
<b>Clonality</b>	Polyclonal
<b>Recommended application</b>	IHC-p, IF, ELISA
<b>Concentration</b>	1 mg/ml
<b>Full name</b>	Protocadherin-11 Antibody
<b>Synonyms</b>	PCDH11Y; PCDH11; PCDH22; PCDHY; Protocadherin-11 Y-linked; Protocadherin-11; Protocadherin on the Y chromosome; PCDH-Y; Protocadherin prostate cancer; Protocadherin-PC; Protocadherin-22; PCDH11X; KIAA

**This product is for research use only, not for use in human, therapeutic or diagnostic procedure.**

### Background

PCDH11Y (protocadherin 11 Y-linked) belongs to the protocadherin family, a subfamily of the cadherin superfamily. The encoded protein consists of an extracellular domain containing seven cadherin repeats, a transmembrane domain, and a cytoplasmic tail that differs from those of the classical cadherins. PCDH11Y is located on the Y chromosome in a block of X/Y homology and is very closely related to its paralog on the X chromosome. The protein is thought to play a role in cell-cell recognition during development of the central nervous system. Alternative splicing results in multiple transcript variants encoding different isoforms.

### Recommended Dilution

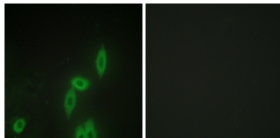
IHC: 1: 100 - 1: 300

IF: 1: 200 - 1: 1000

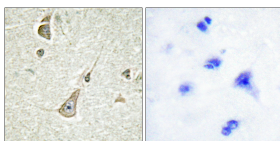
ELISA: 1: 20000

Not yet tested in other applications.

### Images



Immunofluorescence analysis of HepG2 cells, using PCDH-X/Y Antibody. The picture on the right is blocked with the synthesized peptide.



Immunohistochemistry analysis of paraffin-embedded human brain tissue, using PCDH-X/Y Antibody. The picture on the right is blocked with the synthesized peptide.

### Storage

-20°C for one year

501 Changsheng S Rd, Nanhu Dist, Jiaxing, Zhejiang, China

Tel: 86 21 31007137 | E-mail: [save@bt-laboratory.com](mailto:save@bt-laboratory.com) | [www.bt-laboratory.com](http://www.bt-laboratory.com)