

PRP19 Polyclonal Antibody

Description

Product type	Primary Antibody
Code	BT-AP07420
Host	Rabbit
Isotype	IgG
Size	20ul, 50ul, 100ul
Immunogen	The antiserum was produced against synthesized peptide derived from human PRPF19. AA range:171-220
Mol wt	55181
Species reactivity	Human, Mouse, Rat
Clonality	Polyclonal
Recommended application	WB, IHC-p, ELISA
Concentration	1 mg/ml
Full name	PRP19 Antibody
Synonyms	PRPF19; NMP200; PRP19; SNEV; Pre-mRNA-processing factor 19; Nuclear matrix protein 200; PRP19/PSO4 homolog; hPso4; Senescence evasion factor

This product is for research use only, not for use in human, therapeutic or diagnostic procedure.

Background

PSO4 is the human homolog of yeast Pso4, a gene essential for cell survival and DNA repair.

Recommended Dilution

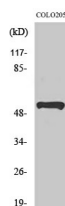
WB: 1: 500 - 1: 2000

IHC: 1: 100 - 1: 300

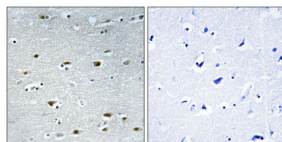
ELISA: 1: 40000

Not yet tested in other applications.

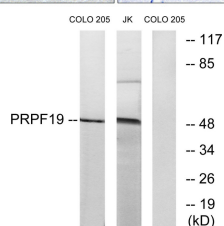
Images



Western Blot analysis of various cells using PRP19 Polyclonal Antibody



Immunohistochemical analysis of paraffin-embedded Human brain. Antibody was diluted at 1:100(4° overnight). High-pressure and temperature Tris-EDTA,pH8.0 was used for antigen retrieval. Negative contrl (right) obtained from antibody was pre-absorbed by immunogen peptide.



Western blot analysis of lysates from COLO and Jurkat cells, using PRPF19 Antibody. The lane on the right is blocked with the synthesized peptide.

Storage

-20°C for one year

501 Changsheng S Rd, Nanhu Dist, Jiaxing, Zhejiang, China

Tel: 86 21 31007137 | E-mail: save@bt-laboratory.com | www.bt-laboratory.com