

PRP6 Polyclonal Antibody

Description

Product type	Primary Antibody
Code	BT-AP07422
Host	Rabbit
Isotype	IgG
Size	20ul, 50ul, 100ul
Immunogen	The antiserum was produced against synthesized peptide derived from human PRPF6. AA range:747-796
Mol wt	106925
Species reactivity	Human, Mouse, Rat
Clonality	Polyclonal
Recommended application	IHC-p, WB, ELISA
Concentration	1 mg/ml
Full name	PRP6 Antibody
Synonyms	PRPF6; C20orf14; Pre-mRNA-processing factor 6; Androgen receptor N-terminal domain-transactivating protein 1; ANT-1; PRP6 homolog; U5 snRNP-associated 102 kDa protein; U5-102 kDa protein

This product is for research use only, not for use in human, therapeutic or diagnostic procedure.

Background

The pre-mRNA processing factor 6 encoded by PRPF6 appears to be involved in pre-mRNA splicing, possibly acting as a bridging factor between U5 and U4/U6 snRNPs in formation of the spliceosome. The encoded protein also can bind androgen receptor, providing a link between transcriptional activation and splicing.

Recommended Dilution

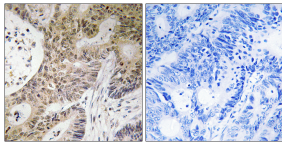
WB: 1: 500 - 2000

ELISA: 1: 10000

IHC: 1: 100 - 1: 300

Not yet tested in other applications.

Images



Immunohistochemistry analysis of paraffin-embedded human colon carcinoma tissue, using PRPF6 Antibody. The picture on the right is blocked with the synthesized peptide.

Storage

-20°C for one year