

PRPF18 Polyclonal Antibody

Description

Product type	Primary Antibody
Code	BT-AP07424
Host	Rabbit
Isotype	IgG
Size	20ul, 50ul, 100ul
Immunogen	The antiserum was produced against synthesized peptide derived from human PRPF18. AA range:182-231
Mol wt	39860
Species reactivity	Human, Mouse, Rat
Clonality	Polyclonal
Recommended application	WB, ELISA
Concentration	1 mg/ml
Full name	PRPF18 Antibody
Synonyms	PRPF18; HPRP18; Pre-mRNA-splicing factor 18; PRP18 homolog; hPRP18

This product is for research use only, not for use in human, therapeutic or diagnostic procedure.

Background

Pre-mRNA splicing occurs in 2 sequential transesterification steps. Pre-mrna processing factor 18 encoded by PRPF18 is found to be essential for the catalytic step II in pre-mRNA splicing process. It is found in the spliceosome, and contains seven WD repeats, which function in protein-protein interactions. Pre-mrna processing factor 18 as a sequence similarity to the yeast splicing factor Prp18.

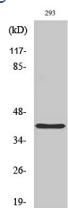
Recommended Dilution

WB: 1: 500 - 1: 2000

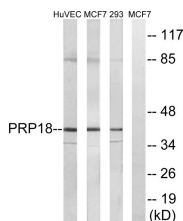
ELISA: 1: 5000

Not yet tested in other applications.

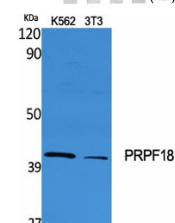
Images



Western Blot analysis of HuvEc cells using PRPF18 Polyclonal Antibody diluted at 1:500 cells nucleus.



Western blot analysis of lysates from 293, MCF-7, and HUVEC cells, using PRPF18 Antibody. The lane on the right is blocked with the synthesized peptide.



Western Blot analysis of various cells using PRPF18 Polyclonal Antibody diluted at 1:500 cells nucleus.

Storage

-20°C for one year

501 Changsheng S Rd, Nanhu Dist, Jiaxing, Zhejiang, China

Tel: 86 21 31007137 | E-mail: save@bt-laboratory.com | www.bt-laboratory.com