

## PRPF31 Polyclonal Antibody

### Description

<b>Product type</b>	Primary Antibody
<b>Code</b>	BT-AP07425
<b>Host</b>	Rabbit
<b>Isotype</b>	IgG
<b>Size</b>	20ul, 50ul, 100ul
<b>Immunogen</b>	The antiserum was produced against synthesized peptide derived from human PRP31. AA range:331-380
<b>Mol wt</b>	55456
<b>Species reactivity</b>	Human, Mouse
<b>Clonality</b>	Polyclonal
<b>Recommended application</b>	WB, ELISA
<b>Concentration</b>	1 mg/ml
<b>Full name</b>	PRPF31 Antibody
<b>Synonyms</b>	PRPF31; PRP31; U4/U6 small nuclear ribonucleoprotein Prp31; Pre-mRNA-processing factor 31; Serologically defined breast cancer antigen NY-BR-99; U4/U6 snRNP 61 kDa protein; Protein 61K; hPrp31

**This product is for research use only, not for use in human, therapeutic or diagnostic procedure.**

### Background

PRPF31 encodes a component of the spliceosome complex and is one of several retinitis pigmentosa-causing genes. When the gene product is added to the spliceosome complex, activation occurs.

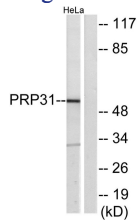
### Recommended Dilution

WB: 1: 500 - 1: 2000

ELISA: 1: 10000

Not yet tested in other applications.

### Images



Western blot analysis of lysates from HeLa cells, using PRPF31 Antibody. The lane on the right is blocked with the synthesized peptide.

### Storage

-20°C for one year