

PRPF38A Polyclonal Antibody

Description

Product type	Primary Antibody
Code	BT-AP07426
Host	Rabbit
Isotype	IgG
Size	20ul, 50ul, 100ul
Immunogen	The antiserum was produced against synthesized peptide derived from human PRPF38A. AA range:104-153
Mol wt	37477
Species reactivity	Human, Mouse
Clonality	Polyclonal
Recommended application	WB, IHC-p, ELISA
Concentration	1 mg/ml
Full name	PRPF38A Antibody
Synonyms	PRPF38A; Pre-mRNA-splicing factor 38A

This product is for research use only, not for use in human, therapeutic or diagnostic procedure.

Background

PRPF38A (Pre-mRNA-splicing factor 38A) is a 312 amino acid nuclear protein that is likely required for pre-mRNA splicing. There are two isoforms of PRPF38A that are produced as a result of alternative splicing events. The gene encoding PRPF38A maps to human chromosome 1, the largest human chromosome which spans about 260 million base pairs and makes up 8% of the human genome. There are about 3000 genes on chromosome 1 and considering the great number of genes there are also a large number of diseases associated with chromosome 1. Notably, the rare aging disease Hutchinson-Gilford progeria is associated with the LMNA gene which encodes lamin A. When defective, the LMNA gene product can build up in the nucleus and cause characteristic nuclear blebs. The mechanism of rapidly enhanced aging is unclear and is a topic of continuing exploration. The MUTYH gene is located on chromosome 1 and is partially responsible for familial adenomatous polyposis. Stickler syndrome, Parkinsons, Gaucher disease and Usher syndrome are also associated with chromosome 1.

Recommended Dilution

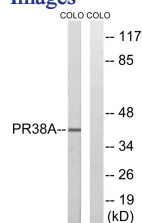
WB: 1: 500 - 1: 2000

IHC: 1: 100 - 1: 300

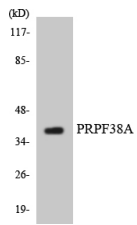
ELISA: 1: 20000

Not yet tested in other applications.

Images



Western blot analysis of lysates from COLO cells, using PRPF38A Antibody. The lane on the right is blocked with the synthesized peptide.



Western blot analysis of the lysates from HUVEC cells using PRPF38A antibody.

Storage

-20°C for one year

501 Changsheng S Rd, Nanhu Dist, Jiaxing, Zhejiang, China

Tel: 86 21 31007137 | E-mail: save@bt-laboratory.com | www.bt-laboratory.com