

PRPH Polyclonal Antibody

Description

Product type	Primary Antibody
Code	BT-AP07428
Host	Rabbit
Isotype	IgG
Size	20ul, 50ul, 100ul
Immunogen	The antiserum was produced against synthesized peptide derived from human Peripherin. AA range:421-470
Mol wt	53651
Species reactivity	Human, Rat
Clonality	Polyclonal
Recommended application	WB, IHC-p, ELISA
Concentration	1 mg/ml
Full name	PRPH Antibody
Synonyms	PRPH; NEF4; PRPH1; Peripherin; Neurofilament 4

This product is for research use only, not for use in human, therapeutic or diagnostic procedure.

Background

PRPH encodes a cytoskeletal protein found in neurons of the peripheral nervous system. Peripherin is a type III intermediate filament protein with homology to other cytoskeletal proteins such as desmin, and is a different protein that the peripherin found in photoreceptors. Mutations in PRPH have been associated with susceptibility to amyotrophic lateral sclerosis.

Recommended Dilution

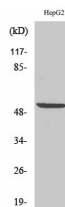
WB: 1: 500 - 1: 2000

IHC: 1: 100 - 1: 300

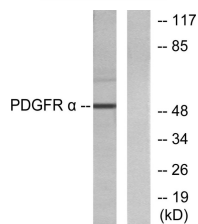
ELISA: 1: 20000

Not yet tested in other applications.

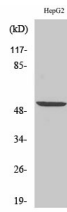
Images



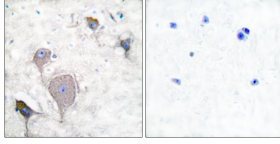
Western Blot analysis of HepG2 cells using PRPH Polyclonal Antibody diluted at 1:1000



Western blot analysis of lysates from HepG2 cells, using Peripherin Antibody. The lane on the right is blocked with the synthesized peptide.



Western Blot analysis of various cells using PRPH Polyclonal Antibody diluted at 1:1000



Immunohistochemistry analysis of paraffin-embedded human brain tissue, using Peripherin Antibody.
The picture on the right is blocked with the synthesized peptide.

Storage

-20°C for one year

501 Changsheng S Rd, Nanhu Dist, Jiaxing, Zhejiang, China

Tel: 86 21 31007137 | E-mail: save@bt-laboratory.com | www.bt-laboratory.com