

## PRSS33 Polyclonal Antibody

### Description

<b>Product type</b>	Primary Antibody
<b>Code</b>	BT-AP07432
<b>Host</b>	Rabbit
<b>Isotype</b>	IgG
<b>Size</b>	20ul, 50ul, 100ul
<b>Immunogen</b>	The antiserum was produced against synthesized peptide derived from human PRSS33. AA range:18-67
<b>Mol wt</b>	29727
<b>Species reactivity</b>	Human
<b>Clonality</b>	Polyclonal
<b>Recommended application</b>	WB, IHC-p, ELISA
<b>Concentration</b>	1 mg/ml
<b>Full name</b>	PRSS33 Antibody
<b>Synonyms</b>	PRSS33; Serine protease 33; Serine protease EOS

This product is for research use only, not for use in human, therapeutic or diagnostic procedure.

### Background

PRSS33 (Protease, Serine 33) is a Protein Coding gene. Gene Ontology (GO) annotations related to PRSS33 include serine-type endopeptidase activity and serine-type peptidase activity. An important paralog of PRSS33 is TPSAB1.

### Recommended Dilution

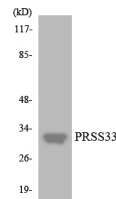
WB: 1: 500 - 1: 2000

IHC: 1: 100 - 1: 300

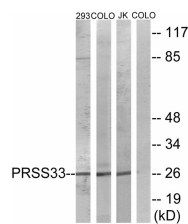
ELISA: 1: 10000

Not yet tested in other applications.

### Images



Western blot analysis of the lysates from HT-29 cells using PRSS33 antibody.



Western blot analysis of lysates from COLO, 293, and Jurkat cells, using PRSS33 Antibody. The lane on the right is blocked with the synthesized peptide.



Western Blot analysis of various cells using PRSS33 Polyclonal Antibody

## Storage

-20°C for one year

501 Changsheng S Rd, Nanhu Dist, Jiaxing, Zhejiang, China

Tel: 86 21 31007137 | E-mail: [save@bt-laboratory.com](mailto:save@bt-laboratory.com) | [www.bt-laboratory.com](http://www.bt-laboratory.com)