

CD5L Polyclonal Antibody

Description

Product type	Primary Antibody
Code	BT-AP07433
Host	Rabbit
Isotype	IgG
Size	20ul, 50ul, 100ul
Immunogen	Synthesized peptide derived from human protein . at AA range: 220-300
Mol wt	N/A
Species reactivity	Human, Mouse
Clonality	Polyclonal
Recommended application	WB, ELISA
Concentration	1 mg/ml
Full name	CD5 antigen-like
Synonyms	CD5 antigen-like ;CT-2;IgM-associated peptide;SP-alpha

This product is for research use only, not for use in human, therapeutic or diagnostic procedure.

Background

May play a role in the regulation of the immune system. Seems to play a role as an inhibitor of apoptosis.,Contains 3 SRCR domains.,subunit:Associated with IgM.,tissue specificity:Expressed in spleen, lymph node, thymus, bone marrow, and fetal liver, but not in non-lymphoid tissues.,

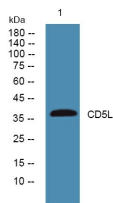
Recommended Dilution

WB: 1: 500 - 1: 2000

ELISA: 1: 5000 - 1: 20000

Not yet tested in other applications.

Images



Western blot analysis of lysates from SW480 cells, primary antibody was diluted at 1:1000, 4°C overnight

Storage

-20°C for 1 year