

PSA Polyclonal Antibody

Description

Product type	Primary Antibody
Code	BT-AP07442
Host	Rabbit
Isotype	IgG
Size	20ul, 50ul, 100ul
Immunogen	The antiserum was produced against synthesized peptide derived from the Internal region of human KLK3. AA range:131-180
Mol wt	28741
Species reactivity	Human
Clonality	Polyclonal
Recommended application	WB, IHC-p, ELISA
Concentration	1 mg/ml
Full name	PSA Antibody
Synonyms	KLK3; APS; Prostate-specific antigen; PSA; Gamma-seminoprotein; Semin; Kallikrein-3; P-30 antigen; Semenogelase

This product is for research use only, not for use in human, therapeutic or diagnostic procedure.

Background

Kallikreins are a subgroup of serine proteases having diverse physiological functions. Growing evidence suggests that many kallikreins are implicated in carcinogenesis and some have potential as novel cancer and other disease biomarkers. KLK3 is one of the fifteen kallikrein subfamily members located in a cluster on chromosome 19. Its protein product is a protease present in seminal plasma. It is thought to function normally in the liquefaction of seminal coagulum, presumably by hydrolysis of the high molecular mass seminal vesicle protein. Serum level of this protein, called PSA in the clinical setting, is useful in the diagnosis and monitoring of prostatic carcinoma. Alternate splicing of this gene generates several transcript variants encoding different isoforms.

Recommended Dilution

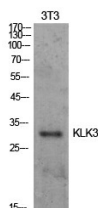
WB: 1: 500 - 1: 2000

IHC-p: 1: 100 - 1: 300

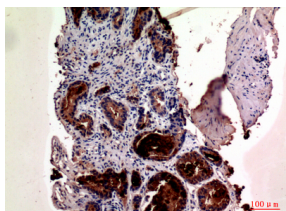
ELISA: 1: 10000

Not yet tested in other applications.

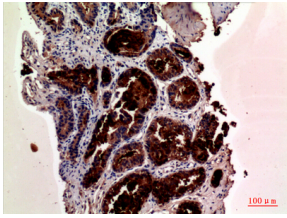
Images



Western Blot analysis of NIH-3T3 cells using PSA Polyclonal Antibody. Secondary antibody was diluted at 1:20000



Immunohistochemical analysis of paraffin-embedded human-prostate-cancer, antibody was diluted at 1:100



Immunohistochemical analysis of paraffin-embedded human-prostate-cancer, antibody was diluted at 1:100

Storage

-20°C for one year

501 Changsheng S Rd, Nanhu Dist, Jiaxing, Zhejiang, China

Tel: 86 21 31007137 | E-mail: save@bt-laboratory.com | www.bt-laboratory.com