

PSCA Polyclonal Antibody

Description

Product type	Primary Antibody
Code	BT-AP07443
Host	Rabbit
Isotype	IgG
Size	20ul, 50ul, 100ul
Immunogen	The antiserum was produced against synthesized peptide derived from human Prostate Stem Cell Antigen. AA range:41-90
Mol wt	12912
Species reactivity	Human, Mouse
Clonality	Polyclonal
Recommended application	WB, ELISA
Concentration	1 mg/ml
Full name	PSCA Antibody
Synonyms	PSCA; Prostate stem cell antigen

This product is for research use only, not for use in human, therapeutic or diagnostic procedure.

Background

PSCA encodes a glycosylphosphatidylinositol-anchored cell membrane glycoprotein. In addition to being highly expressed in the prostate it is also expressed in the bladder, placenta, colon, kidney, and stomach. PSCA is up-regulated in a large proportion of prostate cancers and is also detected in cancers of the bladder and pancreas. PSCA includes a polymorphism that results in an upstream start codon in some individuals; this polymorphism is thought to be associated with a risk for certain gastric and bladder cancers. Alternative splicing results in multiple transcript variants.

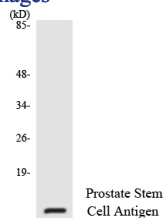
Recommended Dilution

WB: 1: 500 - 1: 2000

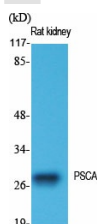
ELISA: 1: 20000

Not yet tested in other applications.

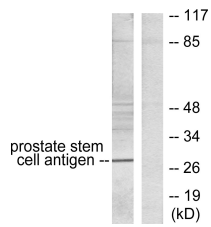
Images



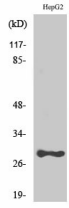
Western blot analysis of the lysates from HeLa cells using Prostate Stem Cell Antigen antibody.



Western Blot analysis of various cells using PSCA Polyclonal Antibody diluted at 1:1000



Western blot analysis of lysates from HepG2 cells, using Prostate Stem Cell Antigen Antibody. The lane on the right is blocked with the synthesized peptide.



Western Blot analysis of HepG2 cells using PSCA Polyclonal Antibody diluted at 1:1000

Storage

-20°C for one year

501 Changsheng S Rd, Nanhu Dist, Jiaxing, Zhejiang, China

Tel: 86 21 31007137 | E-mail: save@bt-laboratory.com | www.bt-laboratory.com