

PSK2 Polyclonal Antibody

Description

Product type	Primary Antibody
Code	BT-AP07455
Host	Rabbit
Isotype	IgG
Size	20ul, 50ul, 100ul
Immunogen	The antiserum was produced against synthesized peptide derived from human TAOK1. AA range:431-480
Mol wt	116070
Species reactivity	Human, Mouse, Rat
Clonality	Polyclonal
Recommended application	WB, IHC-p, ELISA
Concentration	1 mg/ml
Full name	PSK2 Antibody
Synonyms	TAOK1; KIAA1361; MAP3K16; MARKK; Serine/threonine-protein kinase TAO1; Kinase from chicken homolog B; hKFC-B; MARK Kinase; MARKK; Prostate-derived sterile 20-like kinase 2; PSK-2; PSK2; Prostate-deriv

This product is for research use only, not for use in human, therapeutic or diagnostic procedure.

Background

TAK1 is a mitogen-activated protein kinase kinase kinase that can be activated by TGF- β , bone morphogenetic protein and other cytokines including IL-1. In vivo activation of TAK1 requires association with TAK1 binding protein 1 (TAB1), which triggers phosphorylation of TAK1. Another adaptor protein, TAB2, links TAK1 with TRAF6 and mediates TAK1 activation upon IL-1 stimulation. Once activated, TAK1 phosphorylates MAPK kinases MKK4 and MKK3/6, which activate p38 MAPK and JNK, respectively. In addition, TAK1 activates the NF- κ B pathway by interacting with TRAF6 and phosphorylating the NF- κ B inducing kinase (NIK).

Recommended Dilution

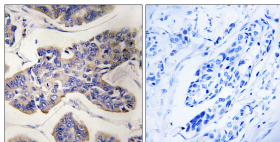
WB: 1: 500 - 1: 2000

IHC: 1: 100 - 1: 300

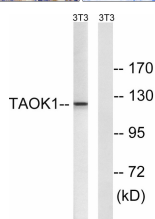
ELISA: 1: 5000

Not yet tested in other applications.

Images



Immunohistochemistry analysis of paraffin-embedded human breast carcinoma tissue, using TAOK1 Antibody. The picture on the right is blocked with the synthesized peptide.



Western blot analysis of lysates from NIH/3T3 cells, using TAOK1 Antibody. The lane on the right is blocked with the synthesized peptide.

Storage

-20°C for one year

501 Changsheng S Rd, Nanhu Dist, Jiaxing, Zhejiang, China

Tel: 86 21 31007137 | E-mail: save@bt-laboratory.com | www.bt-laboratory.com