

PSK-H1 Polyclonal Antibody

Description

Product type	Primary Antibody
Code	BT-AP07456
Host	Rabbit
Isotype	IgG
Size	20ul, 50ul, 100ul
Immunogen	The antiserum was produced against synthesized peptide derived from human KPSH1. AA range:261-310
Mol wt	48035
Species reactivity	Human, Mouse
Clonality	Polyclonal
Recommended application	WB, IHC-p, ELISA
Concentration	1 mg/ml
Full name	PSK-H1 Antibody
Synonyms	PSKH1; Serine/threonine-protein kinase H1; Protein serine kinase H1; PSK-H1

This product is for research use only, not for use in human, therapeutic or diagnostic procedure.

Background

PSKH1 (Protein Serine Kinase H1) is a Protein Coding gene. Among its related pathways are mRNA Splicing - Major Pathway. Gene Ontology (GO) annotations related to PSKH1 include transferase activity, transferring phosphorus-containing groups and protein tyrosine kinase activity. An important paralog of PSKH1 is CAMK2D.

Recommended Dilution

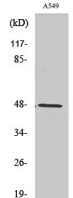
WB: 1: 500 - 1: 2000

IHC: 1: 100 - 1: 300

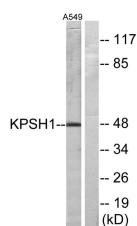
ELISA: 1: 20000

Not yet tested in other applications.

Images



Western Blot analysis of various cells using PSK-H1 Polyclonal Antibody



Western blot analysis of lysates from A549 cells, using KPSH1 Antibody. The lane on the right is blocked with the synthesized peptide.

Storage

-20°C for one year

501 Changsheng S Rd, Nanhu Dist, Jiaxing, Zhejiang, China

Tel: 86 21 31007137 | E-mail: save@bt-laboratory.com | www.bt-laboratory.com