

PSMD11 Polyclonal Antibody

Description

Product type	Primary Antibody
Code	BT-AP07459
Host	Rabbit
Isotype	IgG
Size	20ul, 50ul, 100ul
Immunogen	The antiserum was produced against synthesized peptide derived from human PSMD11. AA range:271-320
Mol wt	47464
Species reactivity	Human, Mouse
Clonality	Polyclonal
Recommended application	WB, IHC-p, ELISA
Concentration	1 mg/ml
Full name	PSMD11 Antibody
Synonyms	PSMD11; 26S proteasome non-ATPase regulatory subunit 11; 26S proteasome regulatory subunit RPN6; 26S proteasome regulatory subunit S9; 26S proteasome regulatory subunit p44.5

This product is for research use only, not for use in human, therapeutic or diagnostic procedure.

Background

The 26S proteasome is a multicatalytic proteinase complex with a highly ordered structure composed of 2 complexes, a 20S core and a 19S regulator. The 20S core is composed of 4 rings of 28 non-identical subunits; 2 rings are composed of 7 alpha subunits and 2 rings are composed of 7 beta subunits. The 19S regulator is composed of a base, which contains 6 ATPase subunits and 2 non-ATPase subunits, and a lid, which contains up to 10 non-ATPase subunits. Proteasomes are distributed throughout eukaryotic cells at a high concentration and cleave peptides in an ATP/ubiquitin-dependent process in a non-lysosomal pathway. PSMD11 encodes a member of the proteasome subunit S9 family that functions as a non-ATPase subunit of the 19S regulator and is phosphorylated by AMP-activated protein kinase. Alternatively spliced transcript variants have been observed for PSMD11.

Recommended Dilution

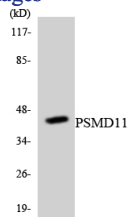
WB: 1: 500 - 1: 2000

IHC: 1: 100 - 1: 300

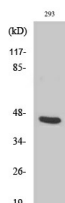
ELISA: 1: 10000

Not yet tested in other applications.

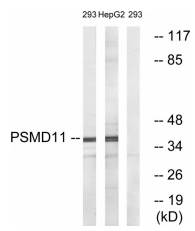
Images



Western blot analysis of the lysates from RAW264.7 cells using PSMD11 antibody.



Western Blot analysis of various cells using PSMD11 Polyclonal Antibody



Western blot analysis of lysates from 293 and HepG2 cells, using PSMD11 Antibody. The lane on the right is blocked with the synthesized peptide.

Storage

-20°C for one year

501 Changsheng S Rd, Nanhu Dist, Jiaxing, Zhejiang, China

Tel: 86 21 31007137 | E-mail: save@bt-laboratory.com | www.bt-laboratory.com