

PTG Polyclonal Antibody

Description

Product type	Primary Antibody
Code	BT-AP07474
Host	Rabbit
Isotype	IgG
Size	20ul, 50ul, 100ul
Immunogen	The antiserum was produced against synthesized peptide derived from human PPP1R3C. AA range:44-93
Mol wt	36445
Species reactivity	Human, Monkey
Clonality	Polyclonal
Recommended application	WB, IHC-p, ELISA
Concentration	1 mg/ml
Full name	PTG Antibody
Synonyms	PPP1R3C; PPP1R5; Protein phosphatase 1 regulatory subunit 3C; Protein phosphatase 1 regulatory subunit 5; PP1 subunit R5; Protein targeting to glycogen; PTG

This product is for research use only, not for use in human, therapeutic or diagnostic procedure.

Background

PPP1R3C (protein phosphatase 1 regulatory subunit 3C) encodes a regulatory subunit of protein phosphatase-1 (PP1). PP1 catalyzes reversible protein phosphorylation, which is important in a wide range of cellular activities: neuronal, muscular, RNA splicing, protein synthesis, cell death, and glycogen metabolism, to name just a few. By interacting with different regulatory subunits, PP1 is directed to different parts of the cell, to different substrates, or to respond to extracellular signals.

Recommended Dilution

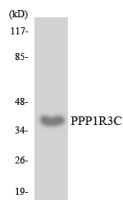
WB: 1: 500 - 1: 2000

IHC: 1: 100 - 1: 300

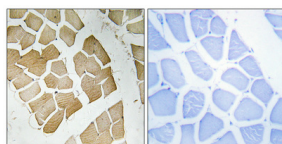
ELISA: 1: 20000

Not yet tested in other applications.

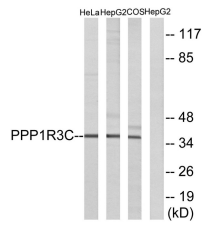
Images



Western blot analysis of the lysates from HeLa cells using PPP1R3C antibody.



Immunohistochemical analysis of paraffin-embedded Human skeletal muscle. Antibody was diluted at 1:100(4° overnight). High-pressure and temperature Tris-EDTA,pH8.0 was used for antigen retrieval. Negative control (right) obtained from antibody was pre-absorbed by immunogen peptide.



Storage

-20°C for one year

501 Changsheng S Rd, Nanhu Dist, Jiaxing, Zhejiang, China

Tel: 86 21 31007137 | E-mail: save@bt-laboratory.com | www.bt-laboratory.com