

PTGR2 Polyclonal Antibody

Description

Product type	Primary Antibody
Code	BT-AP07475
Host	Rabbit
Isotype	IgG
Size	20ul, 50ul, 100ul
Immunogen	The antiserum was produced against synthesized peptide derived from human ZADH1. AA range:181-230
Mol wt	38499
Species reactivity	Human
Clonality	Polyclonal
Recommended application	WB, IHC-p, ELISA
Concentration	1 mg/ml
Full name	PTGR2 Antibody
Synonyms	PTGR2; ZADH1; Prostaglandin reductase 2; PRG-2; 15-oxoprostaglandin 13-reductase; Zinc-binding alcohol dehydrogenase domain-containing protein 1

This product is for research use only, not for use in human, therapeutic or diagnostic procedure.

Background

PTGR2 encodes an enzyme involved in the metabolism of prostaglandins. Prostaglandin reductase 2 catalyzes the NADPH-dependent conversion of 15-keto-prostaglandin E2 to 15-keto-13,14-dihydro-prostaglandin E2. This protein may also be involved in regulating activation of the peroxisome proliferator-activated receptor. Alternative splicing results in multiple transcript variants.

Recommended Dilution

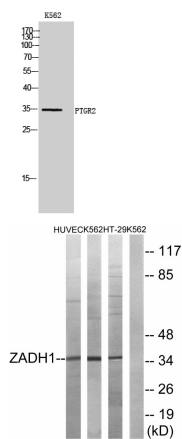
WB: 1: 500 - 1: 2000

IHC: 1: 100 - 1: 300

ELISA: 1: 10000

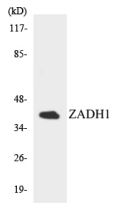
Not yet tested in other applications.

Images



Western Blot analysis of K562 cells using PTGR2 Polyclonal Antibody

Western blot analysis of lysates from K562, HUVEC, and HT-29 cells, using ZADH1 Antibody. The lane on the right is blocked with the synthesized peptide.



Western blot analysis of the lysates from HepG2 cells using ZADH1 antibody.

Storage

-20°C for one year

501 Changsheng S Rd, Nanhu Dist, Jiaxing, Zhejiang, China

Tel: 86 21 31007137 | E-mail: save@bt-laboratory.com | www.bt-laboratory.com