

Cdc16(Phospho Ser560) Polyclonal Antibody

Description

Product type	Primary Antibody
Code	BT-AP07479
Host	Rabbit
Isotype	IgG
Size	20ul, 50ul, 100ul
Immunogen	The antiserum was produced against synthesized peptide derived from human CDC16/APC6 around the phosphorylation site of Ser560. AA range:526-575
Mol wt	71656
Species reactivity	Human, Mouse
Clonality	Polyclonal
Recommended application	WB, IHC-p, IF, ICC, ELISA
Concentration	1 mg/ml
Full name	Cell division cycle protein 16 homolog
Synonyms	Cell division cycle protein 16 homolog; CDC16; ANAPC6; Cell division cycle protein 16 homolog; Anaphase-promoting complex subunit 6; APC6; CDC16 homolog; CDC16Hs; Cyclosome subunit 6

This product is for research use only, not for use in human, therapeutic or diagnostic procedure.

Background

The protein encoded by this gene functions as a protein ubiquitin ligase and is a component of the multiprotein APC complex. The APC complex is a cyclin degradation system that governs exit from mitosis by targeting cell cycle proteins for degradation by the 26S proteasome. Each component protein of the APC complex is highly conserved among eukaryotic organisms. This protein, and other APC complex proteins, contain a tetratricopeptide repeat (TPR) domain; a protein domain that is often involved in protein-protein interactions and the assembly of multiprotein complexes. Multiple alternatively spliced transcript variants, encoding distinct proteins, have been identified.

Recommended Dilution

WB: 1: 500 - 1: 2000

IHC-p: 1: 100 - 1: 300

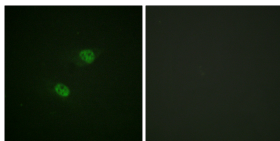
IF: 1: 200 - 1: 1000

ICC: 1: 200 - 1: 1000

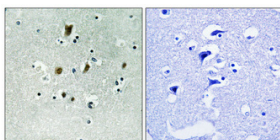
ELISA: 1: 20000

Not yet tested in other applications.

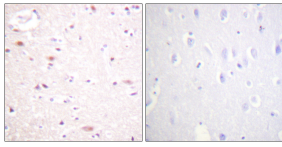
Images



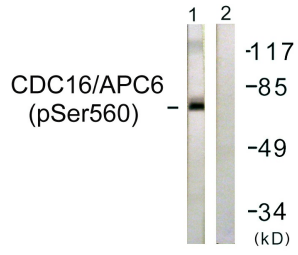
Immunofluorescence analysis of HeLa cells, using CDC16/APC6 (Phospho-Ser560) Antibody. The picture on the right is blocked with the phospho peptide.



Immunohistochemical analysis of paraffin-embedded Human brain. Antibody was diluted at 1:100(4°C overnight). High-pressure and temperature Tris-EDTA,pH8.0 was used for antigen retrieval. Negative control (right) obtained from antibody was pre-absorbed by immunogen peptide.



Immunohistochemistry analysis of paraffin-embedded human brain, using CDC16/APC6 (Phospho-Ser560) Antibody. The picture on the right is blocked with the phospho peptide.



Western blot analysis of lysates from HUVEC cells, using CDC16/APC6 (Phospho-Ser560) Antibody. The lane on the right is blocked with the phospho peptide.

Storage

-20°C for 1 year

501 Changsheng S Rd, Nanhu Dist, Jiaxing, Zhejiang, China

Tel: 86 21 31007137 | E-mail: save@bt-laboratory.com | www.bt-laboratory.com