

PTH-rP Polyclonal Antibody

Description

Product type	Primary Antibody
Code	BT-AP07480
Host	Rabbit
Isotype	IgG
Size	20ul, 50ul, 100ul
Immunogen	The antiserum was produced against synthesized peptide derived from the Internal region of human PTHLH. AA range:101-150
Mol wt	20194
Species reactivity	Human
Clonality	Polyclonal
Recommended application	WB, ELISA
Concentration	1 mg/ml
Full name	PTH-rP Antibody
Synonyms	Parathyroid hormone-related protein (PTH-rP) (PTHrP) (Parathyroid hormone-like protein) (PLP) [Cleaved into: PTHrP[1-36]; PTHrP[38-94]; Osteostatin (PTHrP[107-139])]

This product is for research use only, not for use in human, therapeutic or diagnostic procedure.

Background

The protein encoded by PTHLH (parathyroid hormone like hormone) is a member of the parathyroid hormone family. This hormone, via its receptor, PTHR1, regulates endochondral bone development and epithelial-mesenchymal interactions during the formation of the mammary glands and teeth. It is responsible for most cases of humoral hypercalcemia of malignancy, and mutations in PTHLH are associated with brachydactyly type E2 (BDE2). Alternatively spliced transcript variants have been found for PTHLH. There is also evidence for alternative translation initiation from non-AUG (CUG and GUG) start sites, downstream of the initiator AUG codon, resulting in nuclear forms of this hormone.

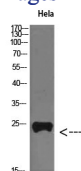
Recommended Dilution

WB: 1: 500 - 2000

ELISA: 1: 10000 - 20000

Not yet tested in other applications.

Images



Western Blot analysis of Hela cells using PTH-rP Polyclonal Antibody diluted at 1:800. Secondary antibody was diluted at 1:20000

Storage

-20°C for one year