

Cdc25C(Phospho Ser216) Polyclonal Antibody

Description

Product type	Primary Antibody
Code	BT-AP07499
Host	Rabbit
Isotype	IgG
Size	20ul, 50ul, 100ul
Immunogen	The antiserum was produced against synthesized peptide derived from human CDC25C around the phosphorylation site of Ser216. AA range:183-232
Mol wt	53365
Species reactivity	Human, Rat, Mouse
Clonality	Polyclonal
Recommended application	WB, IHC-p, IF, ELISA
Concentration	1 mg/ml
Full name	M-phase inducer phosphatase 3
Synonyms	M-phase inducer phosphatase 3; CDC25C; M-phase inducer phosphatase 3; Dual specificity phosphatase Cdc25C

This product is for research use only, not for use in human, therapeutic or diagnostic procedure.

Background

This gene encodes a conserved protein that plays a key role in the regulation of cell division. The encoded protein directs dephosphorylation of cyclin B-bound CDC2 and triggers entry into mitosis. It also suppresses p53-induced growth arrest. Multiple alternatively spliced transcript variants of this gene have been described.

Recommended Dilution

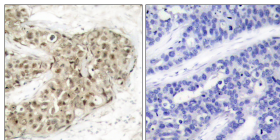
WB: 1: 500 - 1: 2000

IHC-p: 1: 100 - 1: 300

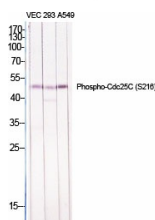
ELISA: 1: 10000

Not yet tested in other applications.

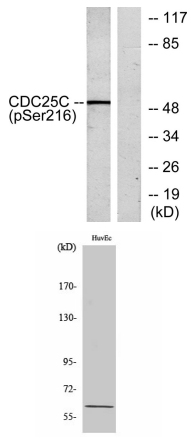
Images



Immunohistochemistry analysis of paraffin-embedded human breast carcinoma, using CDC25C (Phospho-Ser216) Antibody. The picture on the right is blocked with the phospho peptide.



Western Blot analysis of various cells using Phospho-Cdc25C (S216) Polyclonal Antibody diluted at 1:1000



Western Blot analysis of HuvEc cells using Phospho-Cdc25C (S216) Polyclonal Antibody diluted at 1:1000

Western blot analysis of lysates from HUVEC cells treated with serum 20% 30', using CDC25C (Phospho-Ser216) Antibody. The lane on the right is blocked with the phospho peptide.

Storage

-20°C for 1 year

501 Changsheng S Rd, Nanhu Dist, Jiaxing, Zhejiang, China

Tel: 86 21 31007137 | E-mail: save@bt-laboratory.com | www.bt-laboratory.com