

## PTPZeta Polyclonal Antibody

### Description

<b>Product type</b>	Primary Antibody
<b>Code</b>	BT-AP07505
<b>Host</b>	Rabbit
<b>Isotype</b>	IgG
<b>Size</b>	20ul, 50ul, 100ul
<b>Immunogen</b>	The antiserum was produced against synthesized peptide derived from human PTPRZ1. AA range:122-171
<b>Mol wt</b>	254530
<b>Species reactivity</b>	Human, Mouse, Rat
<b>Clonality</b>	Polyclonal
<b>Recommended application</b>	WB, ELISA
<b>Concentration</b>	1 mg/ml
<b>Full name</b>	PTPzeta Antibody
<b>Synonyms</b>	PTPRZ1; HTPZP2; PTPRZ; PTPRZ2; PTPZ; Receptor-type tyrosine-protein phosphatase zeta; R-PTP-zeta; Protein-tyrosine phosphatase receptor type Z polypeptide 1; Protein-tyrosine phosphatase receptor type

**This product is for research use only, not for use in human, therapeutic or diagnostic procedure.**

### Background

PTPRZ1 encodes a member of the receptor protein tyrosine phosphatase family. Expression of PTPRZ1 is restricted to the central nervous system (CNS), and it may be involved in the regulation of specific developmental processes in the CNS. Alternatively spliced transcript variants encoding different isoforms have been described for PTPRZ1.

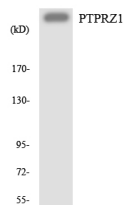
### Recommended Dilution

WB: 1: 500 - 1: 2000

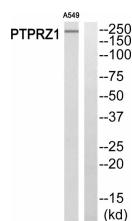
ELISA: 1: 5000

Not yet tested in other applications.

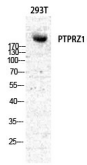
### Images



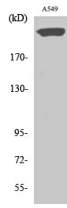
Western blot analysis of the lysates from HeLa cells using PTPRZ1 antibody.



Western blot analysis of PTPRZ1 Antibody. The lane on the right is blocked with the PTPRZ1 peptide.



Western Blot analysis of various cells using PTP $\zeta$  Polyclonal Antibody diluted at 1:500



Western Blot analysis of A549 cells using PTP $\zeta$  Polyclonal Antibody diluted at 1:500

### Storage

-20°C for one year

501 Changsheng S Rd, Nanhu Dist, Jiaxing, Zhejiang, China

Tel: 86 21 31007137 | E-mail: [save@bt-laboratory.com](mailto:save@bt-laboratory.com) | [www.bt-laboratory.com](http://www.bt-laboratory.com)