

PU.1 Polyclonal Antibody

Description

Product type	Primary Antibody
Code	BT-AP07509
Host	Rabbit
Isotype	IgG
Size	20ul, 50ul, 100ul
Immunogen	The antiserum was produced against synthesized peptide derived from human SPI1. AA range:181-230
Mol wt	31083
Species reactivity	Human, Mouse, Rat, Monkey
Clonality	Polyclonal
Recommended application	WB, IHC-p, IF, ELISA
Concentration	1 mg/ml
Full name	PU.1 Antibody
Synonyms	SPI1; Transcription factor PU.1; 31 kDa-transforming protein

This product is for research use only, not for use in human, therapeutic or diagnostic procedure.

Background

SPI1 encodes an ETS-domain transcription factor that activates gene expression during myeloid and B-lymphoid cell development. The nuclear protein binds to a purine-rich sequence known as the PU-box found near the promoters of target genes, and regulates their expression in coordination with other transcription factors and cofactors. Spi-1 proto-oncogene can also regulate alternative splicing of target genes. Multiple transcript variants encoding different isoforms have been found for this SPI1.

Recommended Dilution

WB: 1: 500 - 1: 2000

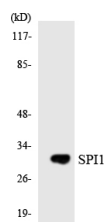
IHC: 1: 100 - 1: 300

IF: 1: 200 - 1: 1000

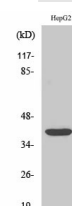
ELISA: 1: 40000

Not yet tested in other applications.

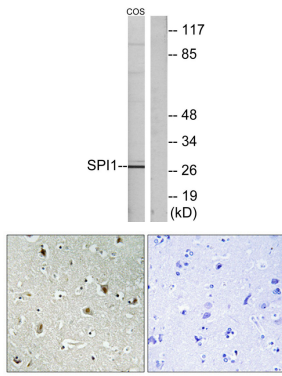
Images



Western blot analysis of the lysates from HUVEC cells using SPI1 antibody.



Western Blot analysis of various cells using PU.1 Polyclonal Antibody cells nucleus.



Western blot analysis of lysates from COS7 cells, using SPI1 Antibody. The lane on the right is blocked with the synthesized peptide.

Immunohistochemical analysis of paraffin-embedded Human brain. Antibody was diluted at 1:100(4° overnight). High-pressure and temperature Tris-EDTA,pH8.0 was used for antigen retrieval. Negative contrl (right) obtaned from antibody was pre-absorbed by immunogen peptide.

Storage

-20°C for one year

501 Changsheng S Rd, Nanhu Dist, Jiaxing, Zhejiang, China

Tel: 86 21 31007137 | E-mail: save@bt-laboratory.com | www.bt-laboratory.com