

PUMA Polyclonal Antibody

Description

Product type	Primary Antibody
Code	BT-AP07510
Host	Rabbit
Isotype	IgG
Size	20ul, 50ul, 100ul
Immunogen	The antiserum was produced against synthesized peptide derived from human PUMA. AA range:120-169
Mol wt	20532/14459
Species reactivity	Human, Mouse, Rat
Clonality	Polyclonal
Recommended application	WB, ELISA
Concentration	1 mg/ml
Full name	PUMA Antibody
Synonyms	BBC3; PUMA; Bcl-2-binding component 3; JFY-1; p53 up-regulated modulator of apoptosis

This product is for research use only, not for use in human, therapeutic or diagnostic procedure.

Background

BBC3 encodes a member of the BCL-2 family of proteins. This family member belongs to the BH3-only pro-apoptotic subclass. BCL2 binding component 3 cooperates with direct activator proteins to induce mitochondrial outer membrane permeabilization and apoptosis. It can bind to anti-apoptotic Bcl-2 family members to induce mitochondrial dysfunction and caspase activation. Because of its pro-apoptotic role, BBC3 is a potential drug target for cancer therapy and for tissue injury. Alternative splicing results in multiple transcript variants.

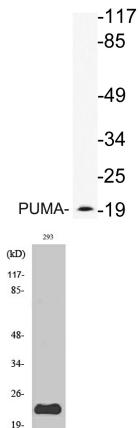
Recommended Dilution

WB: 1: 500 - 1: 2000

ELISA: 1: 10000

Not yet tested in other applications.

Images



Western blot analysis of lysate from 293 cells treated with EGF, using PUMA antibody.

Western Blot analysis of various cells using PUMA Polyclonal Antibody

Storage

-20°C for one year

501 Changsheng S Rd, Nanhu Dist, Jiaxing, Zhejiang, China

Tel: 86 21 31007137 | E-mail: save@bt-laboratory.com | www.bt-laboratory.com