

## Puratrophin 1 Polyclonal Antibody

### Description

<b>Product type</b>	Primary Antibody
<b>Code</b>	BT-AP07512
<b>Host</b>	Rabbit
<b>Isotype</b>	IgG
<b>Size</b>	20ul, 50ul, 100ul
<b>Immunogen</b>	The antiserum was produced against synthesized peptide derived from human PLEKHG4. AA range:654-703
<b>Mol wt</b>	130803
<b>Species reactivity</b>	Human, Monkey
<b>Clonality</b>	Polyclonal
<b>Recommended application</b>	WB, IHC-p, ELISA
<b>Concentration</b>	1 mg/ml
<b>Full name</b>	Puratrophin 1 Antibody
<b>Synonyms</b>	PLEKHG4; PRTPHN1; Puratrophin-1; Pleckstrin homology domain-containing family G member 4; PH domain-containing family G member 4; Purkinje cell atrophy-associated protein 1

This product is for research use only, not for use in human, therapeutic or diagnostic procedure.

### Background

The pleckstrin homology and RhoGEF domain containing G4 encoded by PLEKHG4 can function as a guanine nucleotide exchange factor (GEF) and may play a role in intracellular signaling and cytoskeleton dynamics at the Golgi apparatus. Polymorphisms in the region of this gene have been found to be associated with spinocerebellar ataxia in some study populations. Alternative splicing results in multiple transcript variants.

### Recommended Dilution

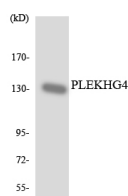
WB: 1: 500 - 1: 2000

IHC: 1: 100 - 1: 300

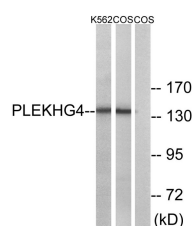
ELISA: 1: 20000

Not yet tested in other applications.

### Images



Western blot analysis of the lysates from HUVEC cells using PLEKHG4 antibody.



Western blot analysis of lysates from COS7 and K562 cells, using PLEKHG4 Antibody. The lane on the right is blocked with the synthesized peptide.

## Storage

-20°C for one year

501 Changsheng S Rd, Nanhu Dist, Jiaxing, Zhejiang, China

Tel: 86 21 31007137 | E-mail: [save@bt-laboratory.com](mailto:save@bt-laboratory.com) | [www.bt-laboratory.com](http://www.bt-laboratory.com)