

PWWP2B Polyclonal Antibody

Description

Product type	Primary Antibody
Code	BT-AP07514
Host	Rabbit
Isotype	IgG
Size	20ul, 50ul, 100ul
Immunogen	The antiserum was produced against synthesized peptide derived from human PWWP2B. AA range:268-317
Mol wt	63967
Species reactivity	Human
Clonality	Polyclonal
Recommended application	WB, IHC-p, ELISA
Concentration	1 mg/ml
Full name	PWWP2B Antibody
Synonyms	PWWP2B; PWWP2; PWWP domain-containing protein 2B

This product is for research use only, not for use in human, therapeutic or diagnostic procedure.

Background

PWWP2B (PWWP domain containing 2B) is a 590 amino acid protein that contains a PWWP domain which is involved in protein-protein interactions. The PWWP2B protein is phosphorylated upon DNA damage, probably by Atm or ATR. The PWWP2B gene is conserved in chimpanzee, cow, mouse, rat, chicken and zebrafish, and maps to human chromosome 10q26. Spanning nearly 135 million base pairs, chromosome 10 makes up approximately 4. % of total DNA in cells and encodes nearly 1,200 genes. Several protein-coding genes, including those that encode for chemokines, cadherins, excision repair proteins, early growth response factors (Egrs) and fibroblast growth receptors (FGFRs), are located on chromosome 10. Defects in some of the genes that map to chromosome 10 are associated with Charcot-Marie Tooth disease, Jackson-Weiss syndrome, Usher syndrome, nonsyndromic deafness, Wolman's syndrome, Cowden syndrome, multiple endocrine neoplasia type 2 and porphyria.

Recommended Dilution

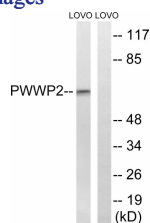
WB: 1: 500 - 1: 2000

IHC: 1: 100 - 1: 300

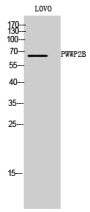
ELISA: 1: 20000

Not yet tested in other applications.

Images



Western blot analysis of lysates from LOVO cells, using PWWP2B Antibody. The lane on the right is blocked with the synthesized peptide.



Western Blot analysis of LOVO cells using PWWP2B Polyclonal Antibody

Storage

-20°C for one year

501 Changsheng S Rd, Nanhu Dist, Jiaxing, Zhejiang, China

Tel: 86 21 31007137 | E-mail: save@bt-laboratory.com | www.bt-laboratory.com