

PDK1(Phospho Ser241) Polyclonal Antibody

Description

Product type	Primary Antibody
Code	BT-AP07524
Host	Rabbit
Isotype	IgG
Size	20ul, 50ul, 100ul
Immunogen	The antiserum was produced against synthesized peptide derived from human PDK1 around the phosphorylation site of Ser241. AA range:210-259
Mol wt	63152
Species reactivity	Human, Mouse, Rat
Clonality	Polyclonal
Recommended application	WB, IHC-p, IF, ELISA
Concentration	1 mg/ml
Full name	3-phosphoinositide-dependent protein kinase 1
Synonyms	3-phosphoinositide-dependent protein kinase 1; PDPK1; PDK1; 3-phosphoinositide-dependent protein kinase 1; hPDK1

This product is for research use only, not for use in human, therapeutic or diagnostic procedure.

Background

Catalytic activity:ATP + a protein = ADP + a phosphoprotein.,Phosphorylates and activates not only PKB/AKT, but also PKA, PKC-zeta, RPS6KA1 and RPS6KB1. May play a general role in signaling processes and in development (By similarity). Isoform 3 is catalytically inactive.,PTM:Phosphorylated on tyrosine and serine/threonine. Phosphorylation on Ser-241 in the activation loop is required for full activity. PDK1 itself can autophosphorylate Ser-241, leading to its own activation.,Belongs to the protein kinase superfamily.,Belongs to the protein kinase superfamily. AGC Ser/Thr protein kinase family. PDK1 subfamily.,Contains 1 PH domain.,Contains 1 protein kinase domain.,subcellular location:Membrane-associated after cell stimulation leading to its translocation. Tyrosine phosphorylation seems to occur only at the plasma membrane.,subunit:Interacts with TUSC4.,tissue specificity:Appears to be expressed ubiquitously.,

Recommended Dilution

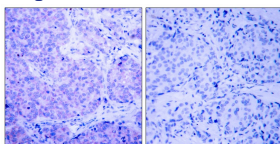
WB: 1: 500 - 1: 2000

IHC-p: 1: 100 - 1: 300

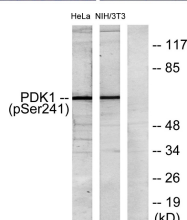
ELISA: 1: 20000

Not yet tested in other applications.

Images



Immunohistochemistry analysis of paraffin-embedded human breast carcinoma, using PDK1 (Phospho-Ser241) Antibody. The picture on the right is blocked with the phospho peptide.



Western blot analysis of lysates from HeLa cells and NIH/3T3 cells, using PDK1 (Phospho-Ser241) Antibody. The lane on the right is blocked with the phospho peptide.

Storage

-20°C for 1 year

501 Changsheng S Rd, Nanhu Dist, Jiaxing, Zhejiang, China

Tel: 86 21 31007137 | E-mail: save@bt-laboratory.com | www.bt-laboratory.com