

QM Polyclonal Antibody

Description

Product type	Primary Antibody
Code	BT-AP07525
Host	Rabbit
Isotype	IgG
Size	20ul, 50ul, 100ul
Immunogen	The antiserum was produced against synthesized peptide derived from human RL10. AA range:111-160
Mol wt	24604
Species reactivity	Human, Mouse, Rat
Clonality	Polyclonal
Recommended application	WB, ELISA
Concentration	1 mg/ml
Full name	QM Antibody
Synonyms	RPL10; DXS648E; QM; 60S ribosomal protein L10; Laminin receptor homolog; Protein QM; Tumor suppressor QM

This product is for research use only, not for use in human, therapeutic or diagnostic procedure.

Background

RPL10 encodes a ribosomal protein that is a component of the 60S ribosome subunit. The related protein in chicken can bind to c-Jun and can repress c-Jun-mediated transcriptional activation. Some studies have detected an association between variation in RPL10 and autism spectrum disorders, though others do not detect this relationship. There are multiple pseudogenes of RPL10 dispersed throughout the genome. Alternative splicing results in multiple transcript variants.

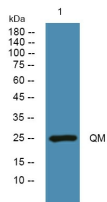
Recommended Dilution

WB: 1: 500 - 1: 2000

ELISA: 1: 20000

Not yet tested in other applications.

Images



Western blot analysis of lysates from Jarkat cells, primary antibody was diluted at 1:1000, 4°over night

Storage

-20°C for one year